

CALIFORNIA GOLD
QUARTERS - HALVES
DOLLARS

●

A descriptive list of privately
issued, interesting and
historical coins
o f s m a l l
denominations.

●

By
ED M. LEE

●

MEMBER: American Numismatic Association No. 2612

CHARTER MEMBER: California Coin Club, No. 12

Copyright 1932
ED M. LEE
GLENDALE, CALIFORNIA



Printed in the United States of America
TOWER-LEE COMPANY, INC.
LOS ANGELES, CALIFORNIA

FOREWORD

Several of my friends among the Numismatists who were aware that I possessed a large number of varieties of California Gold Quarters, Halves and Dollars, and knowing that there was no volume published on these interesting and historical pieces, told me that it was my duty to compile a detailed list and publish it in book form. Desiring to add to the interest in Numismatics in some way within my power, I decided to work toward this end. Several years ago I began adding to my collection and assembling such data as I could obtain with this in view. ¶ Having the field fairly well covered, and having adopted a system of description which I felt would be simple, concise, and quick finding, I decided to publish the list as assembled. ¶ I have been assisted by my sons Kenneth W. Lee, Numismatist, and Wilbur E. Lee, Printer, who have been keenly interested, and have given me valuable assistance in this work. ¶ The specimens from my own cabinet are minutely described. Some of those listed as "Reported" may not be described correctly but are published as found. I have eliminated most die breaks and peculiarities (which are so characteristic of these small coins), listing only what I thought were the distinctive or interesting varieties. See Appendix List for doubtful ones. ¶ While I know the field is not entirely covered, I feel the list herein published will be of much assistance to the student or collector. To that end, this volume is respectfully submitted.



78



71



43



26



4



28



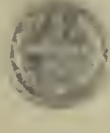
41



6



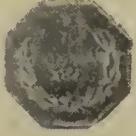
63



10



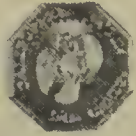
48



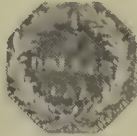
31



28



4



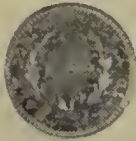
53



27



17



1



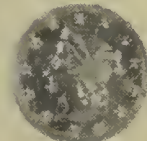
57



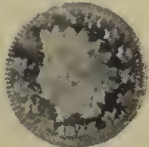
51



50



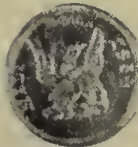
20



68



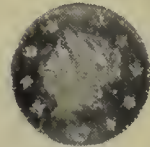
21



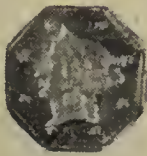
25



8



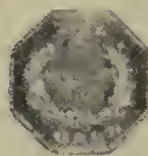
53



3



38



34



36



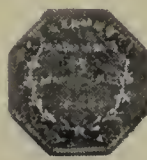
16



8



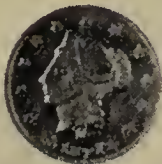
4



30



1



10



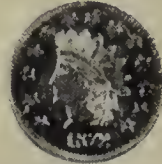
8



7



13



12

INTRODUCTION

NATURE richly endowed California with a colorful background for the Private Issues of Gold Coins. Within its boundaries, and paralleling its approximate seven hundred miles of shore line bordering the Pacific Ocean, stretches the magnificent range of the Sierra Nevada Mountains, with its majestic peaks, topped by Mt. Whitney, the highest in the United States. Here have been fed, nourished and protected the famous Redwood and Sequoia Giant trees, the oldest living things on the face of the earth. Nestled in their midst lies one of nature's treasures, the Yosemite Valley.

It was among these mountains, their slopes and streams, that the millions of gold were unearthed following the find of John Marshall on January 24th, 1848. It was this marvelous production of gold, and the great influx of population, that caused the necessity for the issuing of coins by private persons and firms to take care of the increasing need of exchange, the shortage of which soon became acute. It had become necessary to use gold dust and nuggets which was inconvenient and annoying, as the Customs House refused to accept either, and much needed merchandise was accumulating for the want of coin to pay the duty.

Within approximately six months after Marshall's discovery, a number of influential citizens of San Francisco sent a letter to Governor Mason, the Military Governor of Monterey (then a more important city than San Francisco) asking as a favor that he make a concession in favor of the holders of gold dust. The governor in answering the letter stated that if the California grain gold, then existing in such abundant quantity in the country, **could be wrought into convenient shape** to serve as a substitute for gold and silver coin, he would have no hesitancy in ordering it to be received at the Customs House in payment of duties, at its intrinsic value. On July 31st, 1848, a proclamation was issued by him to this effect. However, discovering a short time later that his act was of doubtful legality, he revoked the order.

But the issuing of private coins had already commenced, and although there was no real authority for this, the need was so great that no action was evoked against the coiners. We find some of these issues dated as late as 1855. It was during the issuing of the larger denomination, which generally bore the names of the coiners, that there began to be issued the smaller denominations of quarters, halves and dollars. So far as can be ascertained, the names of the persons or firms responsible for issuing the smaller coins are unknown. But from the designs and quality it is thought that many of them were struck by the same parties issuing the larger denominations, while others were coined by responsible jewelers and merchants.

With their historical background, there will undoubtedly be an ever increasing interest in these tiny but beautiful pieces, and it is hoped that this published list will be a help to the Numismatists of today and to those who follow in the years to come.



INDEX

	PAGES
Quarter Dollar Octagon	11 - 26
Quarter Dollar Round	27 - 41
Half Dollar Octagon	42 - 52
Half Dollar Round	53 - 67
One Dollar Octagon	69 - 78
One Dollar Round	79 - 82
Appendix List	85 - 94

KEY TO QUICK FINDING

Earliest date first, others in consecutive order.

Liberty Heads first, Indian Heads second, Washington Heads (if any), third.

Fewest stars first in each date, others in consecutive order.

First star on your left is the key position of the stars.

Italic letters are inscriptions found on each piece.

Heavy, or bold, type used in the descriptions are to emphasize the outstanding differences between two or more varieties which are very similar, and can be seen at a glance without reading the entire description.

Varieties with letters on the obverse will have mention of same on the title line of the inscription.

QUARTER DOLLAR OCTAGON

No. 1—1852. Liberty Head. Reported.

No. 2—1852. Indian Head Thirteen Stars

OBVERSE—Indian head, thirteen stars, 1852

REVERSE— $\frac{1}{4}$ Dollar, in wreath. Reported.

No. 3—1853. Liberty Head. Four Stars.

OBVERSE—Large liberty head, four stars, 1853 under the head.

REVERSE— $\frac{1}{4}$ Dollar, inside a beaded circle. Reported.

No. 4—1853. Large Liberty Head. Four Stars.

First star on left opposite upper part of throat.

REVERSE— $\frac{1}{4}$ Dollar 1853, inside a beaded circle. The word *Dollar* is circular. The 8 in date poorly struck. A defect in the die makes a peculiar circle around the second *L* in *Dollar*. Poorly reeded edge. *Plate*.

No. 5—1853. Liberty Head. Five Stars.

OBVERSE—Liberty head, five stars.

REVERSE— $\frac{1}{4}$ Dollar 1853, in wreath. Reported.

No. 6—1853. Small Liberty Head. Nine Stars.

First star on left opposite lower part of throat. Upper part of nose missing. Head not square with octagon.

REVERSE—Similar to No. 4, except no die defect.

No. 7—1854. Large Liberty Head. Four Stars.

First star on left opposite upper part of throat.

REVERSE— $\frac{1}{4}$ Dollar 1854, inside a beaded circle. No line between fraction. Letters in *Dollar* uneven, the *R* is large and the *A* appears double cut. The 4 in date double cut. The *D* and *O* in *Dollar* touch and the lower part of the *O* has a slight die defect. Figures in date out of line. Poorly reeded edge.

No. 8—1854. Large Liberty Head. Five Stars.

First star on left opposite chin.

REVERSE— $\frac{1}{4}$ Dollar 1854, inside a beaded circle. No line between fraction. The *D* and *O* in *Dollar* touch. Letters in *Dollar* out of line. Poorly reeded edge.

No. 9—1854. Small Liberty Head. Eleven Stars.

OBVERSE—Same as No. 10.

REVERSE— $\frac{1}{4}$ Dol, inside an open wreath, the $\frac{1}{4}$ in open part. A period after *Dol*. Twelve berries in pairs. Reeded edge.

No. 10—1854. Small Liberty Head. Eleven Stars.

First star on left opposite lower part of throat. Point of diadem points between the fifth and sixth stars. 1854 under the head, the 1 near the point of neck.

REVERSE— $\frac{1}{4}$ *Dollar*, inside an open wreath, the $\frac{1}{4}$ in open part. Nineteen berries on wreath, one missing on the left wreath opposite the 1 in fraction. A berry touches the lower part of the R. Reeded edge.

No. 11—1854. Indian Head. Eleven Stars.

OBVERSE—Indian head, eleven stars, 1854.

REVERSE— $\frac{1}{4}$, at top of a wide-open wreath, *Dol* inside the wreath. Reported.

No. 12—1855. Large Liberty Head. Four Stars.

First star on left opposite center of throat. Rather crude liberty head. Die defect from point of neck towards star. Poor border.

REVERSE— $\frac{1}{4}$ *Dollar 1855*, inside a beaded circle. No line between fraction. Letters in *Dollar* poorly struck and the *D* and *O* touch. Part of border missing. Poorly reeded edge.

No. 13—1855. Small Liberty Head. Twelve Stars.

Point of neck points to the first star on left. Point of diadem points between the fifth and sixth stars. Slight die defect at point of diadem. Several stars touch border.

REVERSE— $\frac{1}{4}$ *Dollar 1855*, inside an open wreath, the $\frac{1}{4}$ in open part. Sixteen berries on wreath in pairs. Poorly reeded edge.

No. 14—1856. Large Liberty Head. Eight Stars—FD.

First star on left opposite center of throat. Letters FD on coronet, the F crude.

REVERSE— $\frac{1}{4}$ *Dollar 1856*, inside a beaded circle. No line between fraction. The 1 in fraction merges with the 4, at base, and merges with a dot in wreath, at top. Poorly reeded edge.

No. 15—1856. Small Liberty Head. Twelve Stars.

Point of neck points to the first star on left. Minute die defect at point of diadem which points between the fifth and sixth stars.

REVERSE— $\frac{1}{4}$ *Dollar 1856*, inside an open wreath, the $\frac{1}{4}$ in open part. About twenty-four berries on wreath, some without stems or detached from wreath. Poorly reeded edge.

(NOTE—For 1857—Liberty Head. Nine Stars—See Appendix.)

No. 16—1859. Liberty Head. Six Stars.

OBVERSE—Liberty head, six stars.

REVERSE— $\frac{1}{4}$ Dollar 1859, inside a wreath. Reported.

No. 17—1859. Large Liberty Head. Eight Stars.

First star on left below, and almost touching, point of chin. Point of diadem between the fourth and fifth stars.

REVERSE— $\frac{1}{4}$ Dollar 1859, inside an open wreath, the $\frac{1}{4}$ in open part. No line between fraction. The *D* and *R* in *Dollar* touch wreath. No berries on wreath. Plain edge.

No. 18—1859. Liberty Head. Eight Stars—FD.

OBVERSE—Liberty head, eight stars, letters FD on coronet.

REVERSE— $\frac{1}{4}$ Dollar 1859, inside a wreath. Reported.

No. 19—1860. Liberty Head. Thirteen Stars—G.

OBVERSE—Liberty head, thirteen stars, letter G under the head.

REVERSE— $\frac{1}{4}$ Dollar 1860, in wreath. Reported.

No. 20—1860. Small Liberty Head. Fifteen Stars—G.

Point of neck points to the first star on left. Stars close to border. Point of diadem points to the upper part of the seventh star. Letter G under the head, *the G straight*.

REVERSE— $\frac{1}{4}$ Dollar 1860, inside an open wreath, the $\frac{1}{4}$ in open part. No berries on wreath. Plain edge.

No. 21—1860. Small Liberty Head. Fifteen Stars—G.

Point of neck points to the first star on left. Point of diadem points to the seventh star. Letter G under the head, *the G on a slant*.

REVERSE—Same as No. 20.

No. 22—1863. Liberty Head. Thirteen Stars—G.

OBVERSE—Liberty head, thirteen stars, letter G under the head.

REVERSE— $\frac{1}{4}$ (in a shield) Dollar 1863, inside a wreath. Reported.

No. 23—1863. Liberty Head. Fifteen Stars—G.

Point of neck points downward to the upper part of the first star on left. Point of diadem points between the seventh and

eighth stars. Stars crude and mostly touch the border. The letter G under the head crude and appears double cut.

REVERSE— $\frac{1}{4}$ (in a shield) *Dollar 1863*, inside an open wreath. No line between fraction. No berries on wreath. Poorly reeded edge.

No. 24—1864. Large Liberty Head. Ten Stars.

First star on left below head, second star opposite center of throat. Point of diadem points between the fifth and sixth stars.

REVERSE— $\frac{1}{4}$ *Dollar 1864*, inside an open wreath, the $\frac{1}{4}$ in open part. No line between fraction. Fourteen berries on wreath. Poorly reeded edge.

No. 25—1864. Liberty Head. Twelve Stars.

OBVERSE—Rather crude liberty head, twelve stars.

REVERSE— $\frac{1}{4}$ *Dollar 1864*, inside a wreath. Reported.

No. 26—1864. Small Liberty Head. Fifteen Stars—G.

Point of neck points to the first star on left. Point of diadem points between the seventh and eighth stars. Stars crude. An attempt at the word "Liberty" on the coronet, the letters L, I, B and E showing. Letter G under the head and double cut.

REVERSE— $\frac{1}{4}$ (in a shield) in open part of wreath, *Dollar 1864*, inside the wreath. No berries on wreath. No line between fraction. Poorly reeded edge. *Plate.*

No. 27—1865. Small Liberty Head. Fifteen Stars—G.

First star on left below point of neck. Very crudely struck G under the head, part of the G missing. Stars crude and very poorly struck. Faint traces of the word "Liberty" on the diadem. Several stars touch border.

REVERSE— $\frac{1}{4}$ (in a shield) in open part of wreath, *Dollar 1865*, inside the wreath. No line between fraction. No berries on wreath. Plain edge.

No. 27A—1865. Small Liberty Head. Fifteen Stars—G.

OBVERSE—Similar to No. 27, except that the first star on left is merged with the border and neck by a die defect, and the letters L, I, B, and E in word "Liberty," on the coronet, are more discernable.

REVERSE—Same as No. 27.

No. 28—1866. Large Liberty Head. Eight Stars—FD.

First star on left opposite center of throat. Letters FD on coronet, the F crudely struck.

REVERSE— $\frac{1}{4}$ *Dollar 1866*, inside a beaded circle. No line between fraction. The upper part of the 1 in fraction merges with a dot, the lower part with the 4. Whole reverse rather crudely struck. Poorly reeded edge.

No. 29—1866. Large Liberty Head. Nine Stars.

First star on left opposite point of chin. Fourth star at the point of the diadem. Some stars touch border.

REVERSE— $\frac{1}{4}$ *Dollar 1866*, inside an open wreath, the $\frac{1}{4}$ in open part. Eight berries on wreath. No line between fraction. Letters in *Dollar* uneven and mostly touch. The *D* and *R* touch wreath. The 1 of fraction double cut. Poorly reeded edge.

No. 30—1867. Large Liberty Head. Nine Stars.

First star on left opposite point of chin. The fourth star almost touches the point of diadem. Several stars touch border. Stars rather crudely struck.

REVERSE— $\frac{1}{4}$ *Dollar 1867*, inside an open wreath, the $\frac{1}{4}$ in open part. No berries on wreath. No line between fraction. Points of wreath almost close in on bottom part of the 1 of fraction. The *D* and *R* in *Dollar* touch wreath. Letters in *Dollar* uneven. Poorly reeded edge.

No. 31—1867. Liberty Head. Thirteen Stars—G.

OBVERSE—Liberty head, thirteen stars, letter G under the head.

REVERSE— $\frac{1}{4}$ (in a shield) *Dollar 1867*, inside a wreath. Reported.

No. 32—1868. Large Liberty Head. Nine Stars.

First star on left opposite lower part of throat. Point of sixth star almost touches roll of hair.

REVERSE— $\frac{1}{4}$ *Dollar 1868*, inside an open wreath, the $\frac{1}{4}$ in open part. No line between fraction. Poor attempt at berries. Plain edge.

No. 33—1868. Small Liberty Head. Thirteen Stars—G.

First star on left opposite center of throat. Point of diadem points just above the sixth star. Letter G under the head.

REVERSE— $\frac{1}{4}$ (in a shield) in open part of wreath, *Dollar 1868*,

inside the wreath. Part of *Dollar* and date weakly struck. No berries on wreath. Slanting line between fraction. Reeded edge.

No. 34—1868. Indian Head. Thirteen Stars.

First star on left opposite lower part of throat. The seventh star between the third and fourth feathers, a point of the star touching the fourth feather, another point touching the border. Several stars touch border. The last two stars are a trifle smaller than the others. 1868 under the head, the 8 touching, and the 6 almost touching, the hair. Figures in date rest on the border.

REVERSE— $\frac{1}{4}$ *Dollar*, inside an almost closed wreath. Twenty-two berries on wreath. The end leaves of the wreath turn up, and appear as corn husks. The right stand of the *R* in *Dollar* rests on a leaf. Plain edge.

No. 35—1869. Liberty Head. Eight Stars.

OBVERSE—Liberty head, eight stars.

REVERSE— $\frac{1}{4}$ *Dollar 1869*, inside a wreath. No line between fraction. Reported.

No. 36—1869. Large Liberty Head. Nine Stars.

First star on left opposite lower part of throat. A die defect causes a projecting upper lip.

REVERSE— $\frac{1}{4}$ *Dollar 1869*, inside an open wreath, the $\frac{1}{4}$ in open part. *Dollar* and date out of line. No berries on wreath. No line between fraction. Die defect at the stems of the wreath. The 4 of fraction crude and double cut. The *D* and *R* in *Dollar* double cut. Plain edge.

No. 37—1869. Small Liberty Head. Thirteen Stars—G.

OBVERSE—Same as No. 38.

REVERSE— $\frac{1}{4}$ (in a shield) in open part of wreath, *Dollar 1869*, inside the wreath. Slanting line between fraction. **Fourteen berries on wreath. A berry below the right stand of the *R*, another opposite the 9 of date.** Poorly reeded edge.

No. 38—1869. Small Liberty Head. Thirteen Stars—G.

First star on left opposite point of chin. Point of diadem points just above the fifth star. Letter *G* under the head.

REVERSE— $\frac{1}{4}$ (in a shield) in open part of wreath, *Dollar 1869*, inside the wreath. **Eighteen berries on wreath.** Berries and

stems weakly struck. **A berry opposite the center of the R.** Line between fraction on a slant. Reeded edge.

No. 39—1870. Large Liberty Head. Nine Stars.

First star on left opposite lower part of throat. Large, deformed upper lip.

REVERSE— $\frac{1}{4}$ *Dollar 1870*, inside an open wreath, the $\frac{1}{4}$ in open part. Fraction weakly struck. Word *Dollar* uneven and poorly struck. Nine large berries on the left wreath and six small ones on the right. Wreath detached in several places. Short line between fraction. Plain edge.

No. 40—1870. Small Liberty Head. Thirteen Stars—G.

Point of neck points to the first star on left. Letter G under, and touching, the head. Extra strand of hair at back of head.

REVERSE— $\frac{1}{4}$ *Dollar 1870*, inside an open wreath. Four or five attempts at berries. Wreath parted in several places. Poorly reeded edge.

No. 41—1870. Small Liberty Head. Thirteen Stars—G.

Point of neck points to the lower part of the first star on left. 1870 and letter G under the head.

REVERSE— $\frac{1}{4}$ *Dollar Cal*, inside an open wreath, the $\frac{1}{4}$ in open part. A berry and stem make a comma after *Cal*. Line between fraction on an angle. Several dots on wreath for berries. Poorly reeded edge.

No. 42—1870. Small Liberty Head. Thirteen Stars—G.

First star on left opposite lower center of throat. 1870 and letter G under the head, **the G touching the head. The letter G over the 7 of date.**

REVERSE— $\frac{1}{4}$ *Dollar Cal*, inside an open wreath, the $\frac{1}{4}$ in open part. Period after *Cal*. Line between fraction on an angle. Second L and A of *Dollar* appear double cut. About seven attempts at berries. Poorly reeded edge.

No. 43—1870. Small Liberty Head. Thirteen Stars—G.

OBVERSE—Same as No. 41.

REVERSE— $\frac{1}{4}$ *Dollar Cal*, inside an open wreath, the $\frac{1}{4}$ in open part. Period after *Cal*. Line between fraction on an angle. Eight berries on wreath, four on each side. **Two of the berries beneath the word Cal.** Poorly reeded edge. *Plate.*

No. 44—1870. Small Liberty Head. Thirteen Stars—G.

First star on left opposite point of neck. Point of diadem points between the sixth and seventh stars. Stars small and clover-shaped. **A ribbon hanging downward at back of neck. 1870 and letter G under the head, the date resting on the border, the letter G close to the head and between the 8 and 7 of date.**

REVERSE—Same as No. 42. Poorly reeded edge.

No. 45—1870. Small Liberty Head. Thirteen Stars—G.

First star on left opposite point of chin. Head poorly struck and has a defective eye and large, protruding lips. Stars poorly struck. Letter G under the head.

REVERSE— $\frac{1}{4}$ (in a shield) in open part of wreath, *Dollar 1870*, inside the wreath. Upper left stem and berry leans towards the shield. Line between fraction on an angle. The 1 of fraction touches the line between and also touches the shield at the top. Poor attempt at berries. Poorly reeded edge.

No. 46—1871. Liberty Head. Six Stars.

First star on left opposite upper part of throat. Three stars on the left, one above and two on the lower right, the sixth being under the head. Upper part of the nose missing.

REVERSE— $\frac{1}{4}$ *Dollar 1871*, inside an open wreath, the $\frac{1}{4}$ in open part. No line between fraction. Several crude attempts at berries, two on the left and five on the right. The *R* of *Dollar* touches the wreath. The wreath, letters and figures not square with octagon, the top of the right wreath being much higher than the left. Plain edge.

No. 47—1871. Large Liberty Head. Nine Stars.

First star on left opposite lower part of throat. Front of coronet missing. Stars crude.

REVERSE— $\frac{1}{4}$ *Dollar 1871*, inside an open wreath, the $\frac{1}{4}$ in open part. The *D* and *R* touch wreath. No line between fraction. Crude 7 in date. **There are three berries on the right wreath, two in the wreath and the third outside the wreath, with no stem.** The 1 of fraction has a wide stand and flag. The 4 of fraction small, crudely struck and on a slant. Letters crude and poorly struck. Plain edge.

No. 48—1871. Large Liberty Head. Nine Stars.

OBVERSE—Same as No. 47.

REVERSE— $\frac{1}{4}$ *Dollar 1871* inside an open wreath, the $\frac{1}{4}$ in open part. The lower part of the *R* in *Dollar* touches the wreath. No line between fraction. **Four berries on the right wreath, none on the left.** Letters and figures crude, poorly struck and out of line. Plain edge.

No. 49—1871. Large Liberty Head. Nine Stars.

First star on left opposite lower part of throat. Front of coronet missing. Stars crude. Top of nose missing. Slight die defects in face.

REVERSE— $\frac{1}{4}$ *Dollar 1871*, inside an open wreath, the $\frac{1}{4}$ in open part. No line between fraction. Upper part of the *D* in *Dollar* touches wreath. **Four berries on wreath, two on each side.** A berry by the center of the *R*. Letters and figures perfect and finely struck. Plain edge.

No. 50—1871. Large Liberty Head. Nine Stars.

First star on left opposite upper part of throat. Point of diadem points between the fourth and fifth stars. A loose strand of hair almost touches the sixth star. **There is a die defect back of neck extending towards the eighth star.**

REVERSE— $\frac{1}{4}$ *Dollar 1871*, inside an open wreath, the $\frac{1}{4}$ in open part. No line between fraction. The top of the *D* in *Dollar* touches the wreath. Four berries on the wreath, one by the center of the *R*. Plain edge.

No. 51—1871. Liberty Head. Thirteen Stars.

OBVERSE—Liberty head; thirteen stars.

REVERSE— $\frac{1}{4}$ *Dollar 1871*. Reported.

No. 52—1871. Small Liberty Head. Thirteen Stars—G.

First star on left opposite point of neck. The point of neck points to the *l* of date. 1871 and letter *G* under the head, the *G* halfway between the head and the figure 7. The date rests on the border. The upper part of the nose is missing.

REVERSE— $\frac{1}{4}$ *Dollar Cal*, inside an open wreath, the $\frac{1}{4}$ in open part. The line between fraction on an angle. **No berries on wreath.** Plain edge.

No. 53—1871. Small Liberty Head. Thirteen Stars—G.

Point of neck points to the first star on left. 1871 and letter G under the head, the G close to the head. The 8, 7 and 1 of date touch the border. A die defect makes a pronounced roman nose. A small lock of hair extends from the back of the neck and divides, one curling upward and the other extending downward just below the point of neck.

REVERSE— $\frac{1}{4}$ *Dollar Cal*, inside an open wreath. **Two berries on the left wreath, one on the right.** Only the upper end of the slanting line between fraction showing. Plain edge.

No. 54—1871. Small Liberty Head. Thirteen Stars—G.

OBVERSE—Same as No. 52.

REVERSE— $\frac{1}{4}$ *Dollar Cal*, inside an open wreath, the $\frac{1}{4}$ in open part. A berry makes a period after *Cal*. **Nine berries on wreath, four on the left and five on the right.** Letters in *Dollar* uneven. Plain edge.

No. 55—1871. Small Liberty Head. Thirteen Stars—G.

OBVERSE—Same as No. 53.

REVERSE— $\frac{1}{4}$ *Dollar Cal*, inside an open wreath, the $\frac{1}{4}$ in open part. A berry makes a period after *Cal*. Line between fraction on an angle. **Nine berries on wreath, five on the left and four on the right.** The *O* and second *L* in *Dollar* weakly struck. Plain edge.

No. 56—1871. Large Liberty Head. Thirteen Stars—G.

First star on left opposite point of neck. 1871 and letter G under the head, the G halfway between the head and the figure 7. **The 7 and 1 of date touch the border. The bottom of the 8 is missing.** Point of diadem points between the sixth and seventh stars.

REVERSE— $\frac{1}{4}$ *Dollar Cal*, inside an open wreath, the $\frac{1}{4}$ in open part. **A berry makes a period after *Cal*.** Line between fraction on an angle. Ten berries on the wreath, a small berry by the *D*. Plain edge.

No. 57—1871. Small Liberty Head. Thirteen Stars—L.

Point of neck points to the first star on left. 1871 and letter L under the head, the L touching the head. Bottom of the 8 in

date missing. A die defect makes a pronounced roman nose. Die defect on face. Several strands of hair extend loosely back of roll of hair.

REVERSE— $\frac{1}{4}$ *Dollar Cal*, inside an open wreath, the $\frac{1}{4}$ in open part. A berry makes a period after *Cal*. Line between fraction on an angle. Nine berries on wreath, five on the left, four on the right. Plain edge.

No. 58—1872. Liberty Head. Nine Stars.

OBVERSE—Liberty head, nine stars, 1872.

REVERSE— $\frac{1}{4}$ *Dollar*. Reported.

No. 59—1872. Large Liberty Head. Thirteen Stars.

First star on left opposite lower part of throat. Point of the tenth star touches the hair. Seventh star almost touches the diadem. 1872 under the head.

REVERSE— $\frac{1}{4}$ *Dollar Cal*, inside an open wreath, the $\frac{1}{4}$ in open part. No line between fraction. Wreath detached in several places. No berries on the wreath. Plain edge.

No. 60—1872. Washington Head. Thirteen Stars.

First star on left opposite lower part of throat. 1872 under the head. Chin very crude.

REVERSE— $\frac{1}{4}$ *Dollar Cal*, inside an open wreath, the $\frac{1}{4}$ in open part. No line between fraction. No berries on wreath. Letter *O* out of line and open at the top. Plain edge.

No. 61—1872. Washington Head. Thirteen Stars.

OBVERSE—Same as No. 60.

REVERSE— $\frac{1}{4}$ *Dollar Cal*, inside an open wreath, the $\frac{1}{4}$ in open part. **A period after *Cal***. No line between fraction. **Seven berries on wreath**, three on the left and four on the right. Plain edge.

No. 62—1872. Washington Head. Thirteen Stars.

First star on left opposite lower part of throat. Lower right star is above the lower left. Lower right star above the lowest point of hair. Small stars. **Small 1872 under the head, with a period after.**

REVERSE—*A small star* (lower left), *California* (left, upper left and above), *Gold* (upper right and right), *a small star* (lower

right), *Charm* (below), around coin and next to border. Period after *Charm*. $\frac{1}{4}$, in the center of coin, the 1 of the fraction under the *N* of *California*. Plain edge.

No. 63—1872. Washington Head. Thirteen Stars.

First star on left opposite lower part of throat. Lower right star opposite lower point of hair and is close to date. **Large stars. Large 1872 under the head.** Lower right star further down than the lower left.

REVERSE—*A star* (left), *California* (above) *a star* (right), *Charm* (below), around coin and next to border. Period after *Charm*. $\frac{1}{4}$ *Gold*, in center of coin. **The tip of the 1 of fraction below the right stand of the *F* in *California*.** Plain edge.

No. 64—1872. Washington Head. Thirteen Stars.

First star on left opposite lower part of throat. Lower right star above the lower left. Lower right star above the lowest point of hair. **Stars small. Small 1872 under the head.**

REVERSE—*A star* (left), *California* (above), *a star* (right), *Charm* (below), around coin and next to border. Period after *Charm*. The *L* in *California* double cut. $\frac{1}{4}$ *Gold*, in center of coin. **Tip of the 1 of fraction points between the *F* and *O* of *California*.** Plain edge.

No. 65—1872. Indian Head. Thirteen Stars.

OBVERSE—Indian head, thirteen stars, 1872.

REVERSE— $\frac{1}{4}$ *Dol*, inside a wreath. Reported.

No. 66—1872. Indian Head. Thirteen Stars.

First star on left opposite lower part of throat. 1872 under the head, the 7 touching the hair and the 1 almost touching the point of neck.

REVERSE— $\frac{1}{4}$ *Dollar Cal*, inside an almost closed wreath. Period after *Cal*. Twenty-two berries on wreath, one opposite the center of the *R*. The ribband touches the border.

No. 67—1872. Indian Head. Thirteen Stars.

First star on left opposite center of throat. 1872 under the head, the hair touching the 2. The seventh star touches the fourth feather, the eighth star touches the fifth feather.

REVERSE— $\frac{1}{4}$ *Dollar Cal*, inside an almost closed wreath. Period after *Cal*. Twenty-two berries on wreath. The ribband touches the border. Plain edge.

No. 68.—1872. Indian Head. Thirteen Stars.

OBVERSE—Indian head, thirteen stars.

REVERSE— $\frac{1}{4}$ *Dollar 1872*. Reported.

No. 69.—1872. Indian Head. Fifteen Stars.

OBVERSE—Indian head, fifteen stars, 1872.

REVERSE— $\frac{1}{4}$ *Dollar Cal*, inside a wreath. Reported.

No. 70.—1873. Large Liberty Head. Thirteen Stars.

First star on left opposite center of throat. Upper roll of hair at back of head touches a star. 1873 under the head. Upper part of the nose missing. Front of coronet irregular. Top of hair does not connect with the back of the diadem.

REVERSE— $\frac{1}{4}$ *Dollar Cal*, inside an open wreath, the $\frac{1}{4}$ in open part. No line between fraction. No berries on wreath. Plain edge.

No. 71.—1873. Large Liberty Head. Thirteen Stars.

OBVERSE—Same as No. 70.

REVERSE— $\frac{1}{4}$ *Dollar Cal*, inside an open wreath, the $\frac{1}{4}$ in open part. **Period after *Cal***. No line between fraction. **Seven berries on wreath**, three on the left and four on the right. Plain edge. *Plate*.

No. 72.—1873. Small Liberty Head. Thirteen Stars.

First star on left opposite point of neck. Point of neck points to, and almost touches, the 1 of date. Wide space between first and second stars, the second star being opposite chin. Point of diadem points to the sixth star. 1873 under head.

REVERSE— $\frac{1}{4}$ *Dollar Cal*, inside an open wreath, the $\frac{1}{4}$ in open part. **Six berries on wreath**. Plain edge.

No. 73.—1873. Indian Head. Thirteen Stars.

OBVERSE—Indian head, thirteen stars.

REVERSE— $\frac{1}{4}$ *Dollar Cal*, inside a wreath. Reported.

No. 74.—1874. Small Liberty Head. Thirteen Stars.

First star on left opposite lower part of throat. Point of neck points to, and almost touches, the 1 of date. Point of diadem points to the sixth star. 1874 under the head.

REVERSE— $\frac{1}{4}$ *Dollar Cal*, inside an open wreath. Twelve berries on wreath. Plain edge.

No. 75—1874. Indian Head. Thirteen Stars.

Point of neck points to the first star on left. Seventh star between the third and fourth feathers. Stars large and crude, several are double cut and some touch the border. 1874 under the head. The first star on left almost touches the 1 of date, the figures all rest on the border and they slant unevenly. The feathers are crudely cut.

REVERSE— $\frac{1}{4}$ *Dollar Cal*, inside an almost closed wreath. Twenty-three berries on wreath, eleven on the left and twelve on the right, there being two berries by the *L* of *Cal*. All leaves turn down except the left end leaf which turns up above the right end leaf. The wreath, letters and figures not square with octagon, the left side of wreath being higher than the right. Plain edge.

No. 76—1875. Indian Head. Thirteen Stars.

Point of neck points to the lower part of the first star on left. Two points of the fourth star touch two points of the border. A die defect connects the fifth star with border. Part of border missing.

REVERSE— $\frac{1}{4}$ *Dollar Cal*, inside an almost closed wreath. Faint line between fraction. Twenty-three berries on wreath. Plain edge.

No. 77—1876. Large Liberty Head. Thirteen Stars.

First star on left opposite lower part of throat. 1876 under the head, the 8 touching the point of neck. Point of diadem points to, and merges with, the sixth star. Point of neck points between the 1 and 8 of date.

REVERSE— $\frac{1}{4}$ *Dollar Cal*, inside an almost closed wreath. About ten berries on wreath. The *C* in *Cal* double cut. Letters in *Dollar* out of line. Plain edge.

No. 78—1876. Indian Head. Thirteen Stars.

OBVERSE—Indian head, thirteen stars, 1876 under the head.

REVERSE— $\frac{1}{4}$ *Dollar*, inside a wreath. Reported.

No. 79—1876. Small Indian Head. Thirteen Stars.

First star on left opposite the upper part of the 1 of date. Point of neck points to, and almost touches, the 1 of date. First feather points to the seventh star. The lowest feather by itself and resembles a club. Some stars touch border.

REVERSE— $\frac{1}{4}$ *Dollar Cal*, inside an almost closed wreath. Period after *Cal*. **About twelve berries on wreath.** Letter *R* touches the stem of a berry. The *C* in *Cal* double cut. Plain edge.

No. 80—1876. Indian Head. Thirteen Stars.

First star on left opposite center of throat. 1876 under the head, the 7 and 6 touching the hair.

REVERSE— $\frac{1}{4}$ *Dollar Cal*, inside an almost closed wreath. **Twenty-five berries on wreath.** Points of leaves turn downward. Plain edge.

No. 81—1876. Small Indian Head. Thirteen Stars.

First star on left opposite center of throat. The first feather points between the sixth and seventh stars. The last four feathers point to stars. **String of beads around neck.** Beads along the base of the feathers. 1876 under the head, the figures resting on the border. **Point of neck separates the 1 and 8 of date.** All stars touch border.

REVERSE—Similar to No. 79, except that the *R* does not touch stem.

No. 82—1880. Indian Head. Thirteen Stars.

First star on left opposite center of throat. Point of first star on right touches a feather. 1880 under the head, the O small. Date rests on border.

REVERSE— $\frac{1}{4}$ *Dollar*, inside an open wreath. The 4 of fraction hardly distinguishable. The right stand of the *R* touches the wreath. About twenty-three berries on wreath. Plain edge.

No. 83—1880. Indian Head. Thirteen Stars.

First star on left opposite lower part of throat. Point of first star on the right touches a feather. 1880 under the head.

REVERSE— $\frac{1}{4}$ *Dollar Cal*, inside an almost closed wreath. Poor attempt at berries. Letters in *Dollar* out of line. Plain edge.

No. 84—1881. Indian Head. Thirteen Stars.

First star on left opposite lower part of throat. Head not square with octagon. 1881 under, and lined up with, the head and touches the border. The last 8 and 1 touch the hair and the last 1 is smaller.

REVERSE— $\frac{1}{4}$ *Dollar*, inside an open wreath. The *A* and *R* weakly struck. The right stand of the *R* touches a leaf. About twenty-one berries on wreath. Plain edge.

No. 85—1881. Indian Head. Thirteen Stars.

OBVERSE—Indian head, thirteen stars, 1881.

REVERSE— $\frac{1}{4}$ *Dollar Cal*, inside a wreath. Reported.

QUARTER DOLLAR ROUND

No. 1—No Date. Small Liberty Head. Ten Stars.

First star on left opposite lower part of throat. Fourth star in front of diadem.

REVERSE—*A star 1/4 Dollar*, inside an open wreath, the star slightly above the open part and near the 1 of fraction. Slanting line between fraction. Some stems missing from berries on wreath. Plain edge.

No. 2—No Date. Small Liberty Head. Ten Stars.

First star on left below head, second star opposite lower part of throat. The fifth star in front of diadem.

REVERSE—*A star 1/4 Dollar and a star*, inside an open wreath, the first star slightly above the open part. Large 4 in fraction. Poor attempt at berries. Plain edge.

No. 3—No Date. Small Liberty Head. Eleven Stars.

First star on left below head, second star opposite lower part of throat. Point of diadem points between the fifth and sixth stars.

REVERSE—*1/4 Dollar and a star*, inside an open wreath. The lower part of the *D* and *R* touches the wreath, and a berry below the *D* is missing. A stem and berry, on either side, point to the 1 of fraction. The right stand of the 4 is missing. Reeded edge.

No. 3A—No Date. Small Liberty Head. Eleven Stars.

OBVERSE—Same as No. 3.

REVERSE—Similar to No. 3, except that the *D* and *R* do not touch the wreath and the berry is on the stem below the *D*. Reeded edge.

No. 4—No Date. Small Liberty Head. Twelve Stars.

OBVERSE—Similar to No. 6, except that point of neck touches the second star.

REVERSE—*1/4 Dollar*, inside an open wreath, the 1/4 in open part. Fourteen berries on wreath, none opposite the *D* and *R*. Reeded edge.

No. 5—No Date. Small Liberty Head. Twelve Stars.

Point of neck points to, and touches, the first star on left. Point of diadem points between the fifth and sixth stars.

REVERSE— $\frac{1}{4}$ *Dollar and a star*, inside a closed wreath, the wreath closing on top of the 1. **Nineteen berries on wreath.** Reeded edge.

No. 6—No Date. Small Liberty Head. Twelve Stars.

First star on left under head, point of neck points to the second star. The point of diadem points between the sixth and seventh stars.

REVERSE— $\frac{1}{4}$ *Dollar and a star*, inside a closed wreath, the wreath closing on the upper part of the 1. **Nineteen berries on wreath**, ten on the left and nine on the right, a berry missing on the upper right wreath. Reeded edge. *Plate.*

No. 7—No Date. Small Liberty Head. Twelve Stars.

OBVERSE—Same as No. 6.

REVERSE—Similar to No. 6, except that there are nine berries on the left and ten on the right, the berry missing from the upper left wreath instead of the upper right. Reeded edge.

No. 8—No Date. Small Liberty Head. Twelve Stars.

OBVERSE—Same as No. 6.

REVERSE—Similar to No. 6, except that the wreath does not close on the 1 of fraction and there are **twenty berries** on wreath—none missing. Reeded edge.

No. 9—No Date. Liberty Head. Twelve Stars.

OBVERSE—Liberty head, twelve stars.

REVERSE—*A star* $\frac{1}{4}$ *Dollar and a star*, inside a wreath. Reported.

No. 10—No Date. Small Liberty Head. Thirteen Stars.

Point of neck points to the first star on left. Point of diadem points between the sixth and seventh stars.

REVERSE— $\frac{1}{4}$ *Dollar and a star*, inside an almost closed wreath, the 1 of fraction in open part. Twenty berries on wreath in pairs. Letters in *Dollar* slightly uneven. Reeded edge. *Plate.*

No. 11—No Date. Small Liberty Head. Thirteen Stars.

OBVERSE—Small liberty head, thirteen stars.

REVERSE—**25 CENTS**, inside a wreath. Reported.

No. 12—No Date. Small Liberty Head. Thirteen Stars—G.

First star on left opposite lower part of throat. Point of diadem

points between the sixth and seventh stars. Letter G under the head.

REVERSE— $\frac{1}{4}$ *Dollar Cal*, inside an open wreath. Period after *Cal*. No berries on wreath. Plain edge.

No. 13—1852. Indian Head. Thirteen Stars.

First star on left opposite lower part of throat. Six stars on the left and seven on the right. Upper right star connects with border. 1852 under the head.

REVERSE— $\frac{1}{4}$ *Dollar*, inside an almost closed wreath. The *R* of *Dollar* touches the wreath. Plain edge.

No. 14—1853. Small Liberty Head. Nine Stars.

OBVERSE—Small liberty head, nine stars, 1853.

REVERSE— $\frac{1}{4}$ *Dollar*, inside a beaded circle. Reported.

No. 15—1853. Small Liberty Head. Ten Stars.

First star on left beneath head, second star opposite lower part of throat. Point of diadem points between the fifth and sixth stars. Stars imperfect.

REVERSE— $\frac{1}{4}$ *Dollar 1853*, inside an open wreath, the $\frac{1}{4}$ in open part. Letters in *Dollar* out of line, the *A* and *R* crudely struck. 1853 large and the top of the 3 long and straight. Wreath severed in several places. Poor attempt at berries. Plain edge.

No. 16—1853. Liberty Head. Eleven Stars—FD.

First star on left opposite lower part of throat. Point of diadem points between the fifth and sixth stars. Letters FD under the head.

REVERSE— $\frac{1}{4}$ *Dollar 1853*, inside a wide-open wreath, the $\frac{1}{4}$ in open part. The 4 of fraction reversed. Letter *D* of *Dollar* touches the wreath. The 5 of date large. No berries on wreath. A double bow of ribbon on inside of wreath. Poorly reeded edge.

No. 17—1853. Liberty Head. Thirteen Stars.

OBVERSE—Liberty head, thirteen stars.

REVERSE— $\frac{1}{4}$ *Dollar 1853*, inside a wreath. Reported.

No. 18—1853. Liberty Head. Thirteen Stars.

OBVERSE—Liberty head, thirteen stars.

REVERSE— $\frac{1}{4}$ *Dollar 1853*, inside a wreath, the date semi-circular. Reported.

No. 19—1853. Liberty Head. Thirteen Stars—FD.

OBVERSE—Liberty head, thirteen stars, letters FD under the head.

REVERSE— $\frac{1}{4}$ *Dollar 1853*, inside a wreath. The 4 of fraction reversed. No line between fraction. Sawtooth border. Reported.

No. 20—1854. Liberty Head. Twelve Stars.

OBVERSE—Liberty head, twelve stars.

REVERSE— $\frac{1}{4}$ *Dollar 1854*. Reported.

No. 21—1854. Large Liberty Head. Thirteen Stars.

First star on left beneath point of neck. Stars poor and differently sized. A die defect makes face and neck spotted.

REVERSE— $\frac{1}{4}$ *Dollar 1854*, inside a wide-open wreath, the $\frac{1}{4}$ in open part. No line between fraction. Letters in *Dollar* poorly struck, as is also the date. Seventeen berries on wreath, mostly without stems. Plain edge.

No. 22—1854. Defiant Eagle. Thirteen Stars.

OBVERSE—Thirteen stars—1854, around coin and next to border, the date below. A defiant eagle, standing on the ground facing the left, in center of coin.

REVERSE—*25 Cents*, inside the wreath. Reported.

No. 23—1855. Small Liberty Head. Ten Stars.

First star on left in front of point of neck. Most stars touch border. Die defect noticeable in the field.

REVERSE— $\frac{1}{4}$ *Dollar 1855*, inside an open wreath, the $\frac{1}{4}$ in open part. Sixteen berries on wreath, one touching the *D* and another almost touching the *R*. Reeded edge.

(NOTE—For 1855. Large Liberty Head. Eleven Stars, see APPENDIX.)

No. 24—1856. Small Liberty Head. Ten Stars.

First star on left in front of point of neck. Poor border.

REVERSE— $\frac{1}{4}$ *Dollar 1856*, inside an open wreath, the $\frac{1}{4}$ in open part. **Berries hardly distinguishable.** Right wreath parted opposite the *R* and below the 6 of date. Reeded edge.

No. 25—1856. Small Liberty Head. Ten Stars.

First star on left in front of point of neck.

REVERSE— $\frac{1}{4}$ *Dollar 1856*, inside an open wreath, the $\frac{1}{4}$ in open part. The *R* of *Dollar* double cut. **Sixteen berries on wreath**, nine on the left and seven on the right. A berry missing on the right wreath by the *R* and a berry and stem missing at top of the right wreath. Reeded edge.

No. 26—1856. Small Liberty Head. Twelve Stars.

First star on left below head, second star opposite point of neck. Point of diadem points between the sixth and seventh stars.

REVERSE— $\frac{1}{4}$ *Dollar 1856*, inside an open wreath, the $\frac{1}{4}$ in open part. Right wreath parted opposite the *R* in *Dollar* and below the 6 of date. Poor attempt at berries. Poorly reeded edge.

No. 27—1858. Liberty Head. Seven Stars.

OBVERSE—Liberty head, seven stars, 1858. Reported.

No. 28—1859. Large Liberty Head. Ten Stars.

First star on left opposite lower part of throat. Some stars smaller than others. Almost plain border.

REVERSE—*1* (above closed part of wreath) *4 Dollar 1859*, inside the wreath. The *R* of *Dollar* touches a berry and is double struck. The *1* of fraction extends from the border down to the wreath. Poor attempts at berries. Plain edge. *Plate*.

No. 29—1860. Small Liberty Head. Twelve Stars.

Point of neck points to, and touches, the first star on left. Some stars touch border.

REVERSE— $\frac{1}{4}$ *Dollar 1860*, inside an open wreath, the $\frac{1}{4}$ in open part. The right base of the *R* almost touches a leaf. No berries on wreath. Poorly reeded edge.

No. 30—1863. Liberty Head. Fourteen Stars.

OBVERSE—Liberty head, fourteen stars.

REVERSE— $\frac{1}{4}$ (in a shield), *Dollar 1863*. Reported.

No. 31—1864. Small Liberty Head. Fourteen Stars.

First star on left under head, second star just above the point of neck. A point of the seventh star almost touches the diadem.

REVERSE— $\frac{1}{4}$ *Dollar 1864*, inside an open wreath, the $\frac{1}{4}$ in open part. No berries on wreath. The *R* touches the wreath. Reeded edge.

No. 32—1864. Small Liberty Head. Fourteen Stars.

Point of neck points to the first star on left. Point of diadem points to the seventh star. Stars small, crude and several touch the border. The hair ends in three points at back of neck. REVERSE— $\frac{1}{4}$ *Dollar 1864*, inside an open wreath, the $\frac{1}{4}$ in open part. No berries on wreath. Letters and figures out of line. Lower part of the 1 of fraction double cut and the top of the 4 of fraction touches the line between. Lower part of the *A* in *Dollar* double cut. Plain edge.

No. 33—1865. Liberty Head. Seven Stars.

OBVERSE—Liberty head, seven stars.

REVERSE— $\frac{1}{4}$ *Dollar 1865*. Reported.

No. 34—1865. Liberty Head. Seven Stars.

OBVERSE—Liberty head, seven stars.

REVERSE— $\frac{1}{4}$ *Dollar 1865*. Letters NFD. Reported.

No. 35—1865. Small Liberty Head. Ten Stars.

OBVERSE—Small liberty head, ten stars.

REVERSE— $\frac{1}{4}$ (above line of wreath), *Dollar 1865*, inside the wreath. Reported.

No. 36—1865. Large Liberty Head. Ten Stars.

First star on left in front of lower part of throat. Some stars weakly struck. The eye is barely discernable. The nose, mouth and chin peculiar.

REVERSE— $\frac{1}{4}$ *Dola 1865*, inside an open wreath, the $\frac{1}{4}$ in open part. No line between fraction. Part of the *D*, *L* and *A* missing. The 5 in date poor and out of line. Sixteen berries on wreath without stems. Poorly reeded edge.

No. 37—1865. Small Liberty Head. Thirteen Stars.

OBVERSE—Small Liberty head, thirteen stars.

REVERSE— $\frac{1}{4}$ *Dollar 1865*, inside a wreath. Reported.

No. 38—1865. Small Liberty Head. Fourteen Stars.

Point of neck points to the first star on left. Stars poorly executed, some touching the border.

REVERSE— $\frac{1}{4}$ *Dollar 1865*, inside a wide-open wreath, the $\frac{1}{4}$ in open part. Probably eight berries. Faint border. Plain edge.

No. 39—1865. Liberty Head. Fourteen Stars.

OBVERSE—Liberty head, fourteen stars.

REVERSE— $\frac{1}{4}$ *Dollar Cal*, inside a wreath. Reported.

No. 40—1866. Large Liberty Head. Seven Stars.

First star on left opposite center of throat. The star under the head smaller than the others.

REVERSE— $\frac{1}{4}$ *Dollar 1866*, inside an open wreath, the $\frac{1}{4}$ in open part. No line between fraction. The *A* in *Dollar* out of line. Seventeen berries on wreath, mostly without stems. The berry at the right of the *R* in *Dollar* is missing. The *D* in *Dollar* touches a berry and the wreath. Reeded edge.

No. 41—1866. Liberty Head. Thirteen Stars—G.

OBVERSE—Liberty head, thirteen stars, letter *G* under the head.

REVERSE— $\frac{1}{4}$ *Dollar 1866*, inside a wreath. Reported.

No. 42—1867. Large Liberty Head. Seven Stars.

First star on left opposite center of throat. Star under the head smaller than the others.

REVERSE— $\frac{1}{4}$ *Dollar 1867*, inside an open wreath, the $\frac{1}{4}$ in open part. No berries on wreath. No line between fraction. The *R* in *Dollar* large and merges with the wreath. The 6 and 8 in date weak and the 7 is crude and out of line. Most of border missing. Poorly reeded edge.

No. 43—1867. Small Liberty Head. Thirteen Stars—G.

First star on left opposite center of throat. Point of diadem points to the upper part of the sixth star. Letter *G* under the head, a dot touching the left center edge.

REVERSE— $\frac{1}{4}$ *Dollar 1867*, inside an open wreath, the $\frac{1}{4}$ in open part. Wide space between the fraction and word *Dollar*. Twenty-two berries on wreath, the two on the ends pointing to the 1 of fraction. Plain edge.

No. 44—1868. Large Liberty Head. Seven Stars.

First star on left opposite center of throat.

REVERSE— $\frac{1}{4}$ *Dollar 1868*, inside an open wreath, the $\frac{1}{4}$ in open part. **Seventeen berries on wreath**, eight on the left and nine on the right. There is one berry on top of the *R* and one at the right of the *R*. Poorly reeded edge.

No. 45—1868. Large Liberty Head. Seven Stars.

OBVERSE—Same as No. 44.

REVERSE—Similar to No. 44, except that the wreath has **only fourteen berries**, eight on the left and six on the right.

No. 46—1868. Liberty Head. Thirteen Stars—G.

OBVERSE—Liberty head, thirteen stars, letter G under the head.

REVERSE— $\frac{1}{4}$ *Dollar 1868*, in wreath. Reported.

No. 47—1868. Indian Head. Thirteen Stars. Reported.**No. 48—1869. Liberty Head. Six Stars.**

OBVERSE—Liberty head, six stars.

REVERSE— $\frac{1}{4}$ *Dollar 1869*. Reported.

No. 49—1869. Small Liberty Head. Thirteen Stars—G.

First star on left opposite lower part of throat. Point of diadem points between the sixth and seventh stars. Letter G under the head. A slight defect in the die makes a large nose and eye, and leaves only a dot where the lips should be.

REVERSE— $\frac{1}{4}$ *Dollar 1869*, inside an open wreath, the $\frac{1}{4}$ in open part. A wide space between the fraction and word *Dollar*. **The large and thick figures in fraction touch the line between.** Rather poor attempt at berries. Poorly reeded edge.

No. 50—1869. Small Liberty Head. Thirteen Stars—G.

OBVERSE—Similar to No. 55, except that the mouth is better struck.

REVERSE— $\frac{1}{4}$ *Dollar 1869*, inside an open wreath, the $\frac{1}{4}$ in open part. Wide space between the fraction and word *Dollar*. **Figures in fraction thin and smaller than in No. 49, and they do not touch the line between.** 1869 weakly struck. Wreath completely severed four times on the left side and three on the right. **Twenty berries on wreath in pairs.** Poorly reeded edge.

No. 51—1869. Small Liberty Head. Thirteen Stars—G.

OBVERSE—Same as No. 49.

REVERSE— $\frac{1}{4}$ *Dollar 1869*, inside an open wreath, the $\frac{1}{4}$ in open part. Wide space between the fraction and word *Dollar*. **Figures in fraction small, well-struck and touch the line between.** **Twenty-two berries on wreath**, the two on the ends opposite the line in the fraction. Poorly reeded edge.

No. 52—1870. Large Liberty Head. Seven Stars.

First star on left in front of center of throat. The point of diadem is missing. The star under the head is smaller than the others.

REVERSE— $\frac{1}{4}$ *Dollar 1870*, inside an open wreath, the $\frac{1}{4}$ in open part. No line between fraction. The 1 and 4 of fraction do not touch and the 1 is almost a 7. About ten berries on wreath are discernable. The *D* in *Dollar* is large and the *O* is open at the top. Plain edge.

No. 52A—1870. Large Liberty Head. Seven Stars.

OBVERSE—Same as No. 52.

REVERSE—Similar to No. 52, except that the 1 and 4 of fraction merge and the *O* in *Dollar* is closed at the top.

No. 53—1870. Large Liberty Head. Seven Stars.

OBVERSE—Same as No. 52.

REVERSE— $\frac{1}{4}$ *Dollar 1870*, inside an open wreath, the $\frac{1}{4}$ in open part. **Lower part of the *D* in *Dollar* touches a leaf.** No line between fraction. The 1 and 4 of fraction do not touch. The 7 of date weekly struck. **A curl extends to the right from the bottom of the *O* of date. Seventeen berries on wreath, nine on the left and eight on the right, two being on the outside lower right wreath.** Plain edge.

No. 54—1870. Small Liberty Head. Thirteen Stars.

Point of neck points up to the first star on left. The star beneath head touches the neck.

REVERSE— $\frac{1}{4}$ *Dollar 1870*, inside an open wreath, the $\frac{1}{4}$ in open part. Poor attempt at a wreath. Line between fraction on an angle. Reeded edge.

No. 55—1870. Small Liberty Head. Thirteen Stars—G.

Point of neck points to the first star on left. 1870 and letter *G* under the head, the *G* touching the head. Die defect in upper part of border.

REVERSE— $\frac{1}{4}$ *Dollar Cal*, inside an open wreath, the $\frac{1}{4}$ in open part. Period after *Cal*. No berries on wreath. Reeded edge.

No. 56—1870. Small Liberty Head. Thirteen Stars—N.

OBVERSE—Small Liberty Head, thirteen stars, letter *N* under the head.

REVERSE— $\frac{1}{4}$ *Dollar 1870*, inside a wreath. Reported.

No. 57—1871. Large Liberty Head. Seven Stars.

First star on left opposite center of throat. The point of diadem is missing.

REVERSE— $\frac{1}{4}$ *Dollar 1871*, inside an open wreath, the $\frac{1}{4}$ in open part. Four berries on wreath, two opposite the word *Dollar* and two at the lower part of the date. No line between fraction. Upper part of the *D* touches the wreath. Plain edge.

No. 58—1871. Large Liberty Head. Thirteen Stars.

First star on left opposite lower part of throat. Rather crude, stoggy head. The point of diadem is missing. 1871 under the head.

REVERSE— $\frac{1}{4}$ *Dollar Cal*, inside an open wreath, the $\frac{1}{4}$ in open part. *Period after Cal*. Attempt at three berries. Plain edge.

No. 59—1871. Liberty Head. Thirteen Stars—G.

Point of neck points to the upper part of the first star on left. 1871 and letter G under the head, the G double cut. The 7 of date out of line.

REVERSE— $\frac{1}{4}$ *Dollar Cal*, inside an open wreath, the $\frac{1}{4}$ in open part. **A small dot, like a period, after *Cal*. No berries on wreath. Plain edge.**

(NOTE: For 1871. Small Liberty Head. Thirteen Stars—H. See Appendix.)

No. 60—1871. Small Liberty Head. Thirteen Stars—G.

Point of neck points to the upper part of the first star on left. 1871 and letter G under the head, the G double cut. Point of diadem points between the sixth and seventh stars. The 7 of date out of line and appears double cut.

REVERSE— $\frac{1}{4}$ *Dollar Cal*, inside an open wreath, the $\frac{1}{4}$ in open part. Line between fraction on an angle. **Twelve berries on wreath**, five on the left, seven on the right, one below, and between, the *A* and *L* of *Cal*. The *L* of *Cal* touches the wreath. Plain edge.

No. 61—1871. Small Liberty Head. Thirteen Stars—L.

First star on left opposite front of neck. 1871 and letter L under the head, the L touching the head. The 8 in date lower and merges into the border. The other figures touch the border.

Die defect from the eyebrows to tip of nose. The die not properly cut in back of head.

REVERSE— $\frac{1}{4}$ *Dollar Cal*, inside an open wreath, the $\frac{1}{4}$ in open part. A period after *Cal*. Six berries on wreath, three on either side. Line between fraction on an angle. Plain edge.

No. 62—1872. Large Liberty Head. Thirteen Stars.

First star on left opposite center of throat. Sixth star opposite point of diadem. 1872 under the head.

REVERSE— $\frac{1}{4}$ *Dollar Cal*, inside an open wreath, the $\frac{1}{4}$ in open part. Line in fraction faint. Probably three attempts at berries on left wreath and none on the right. Plain edge.

No. 63—1872. Washington Head. Thirteen Stars.

Point of neck points to the lower part of the first star on left. Several stars double cut. 1872 under the head.

REVERSE— $\frac{1}{4}$ *Dollar Cal*, inside an open wreath, the $\frac{1}{4}$ in open part. Period after *Cal*. Thirteen berries on wreath, six on the left and seven on the right. Plain edge. *Plate*.

No. 64—1872. Indian Head. Thirteen Stars.

First star on left opposite lower part of throat. Upper three feathers separate stars. Six stars on the left, seven on the right. 1872 under the head. The 1 touching the border, the 7 and 2 merging with border.

REVERSE— $\frac{1}{4}$ *Dollar Cal*, inside an almost closed wreath. Period after *Cal*. A heavy wreath and many berries, some of which touch the border. Plain edge.

No. 65—1872. Indian Head. Thirteen Stars.

First star on left opposite point of neck. **Seventh star between the third and fourth feathers.** 1872 under the head, the 1 and 2 touching the border and **the back of the 2 completely filled in.**

REVERSE— $\frac{1}{4}$ *Dollar Cal*, inside a completely closed wreath. Period after *Cal*, the period being the same size as the berries. Twenty berries which are struck up. The ends of leaves not pointed, most being rather round. The end leaves of the wreath meet, completely closing it. Partly reeded edge.

No. 66—1872. Indian Head. Thirteen Stars.

OBVERSE—Similar to No. 65, except that the base of the 2 of date blends into the border.

REVERSE— $\frac{1}{4}$ *Dollar Cal*, inside an almost closed wreath. A small period after *Cal*. **Twenty-three berries on the wreath**, twelve on the left and eleven on the right. Plain edge.

No. 67—1872. Indian Head. Thirteen Stars

OBVERSE—Similar to No. 65, except that the back of the 2 of date is not filled in.

REVERSE— $\frac{1}{4}$ *Dollar Cal*, inside a completely closed wreath. Period after *Cal*, **the period being smaller than the berries**. **Twenty-four berries on wreath in pairs**, twelve on each side although several berries on the left wreath are hardly distinguishable due to a heavy die break which covers part of the left wreath and evidences of the die breaking showing all over the reverse. The leaves on wreath crude and most are pointed. The end leaves of wreath meet, completely closing it. Partly reeded edge.

No. 68—1873. Large Liberty Head. Thirteen Stars.

First star on left opposite lower part of throat. Sixth star opposite the point of diadem. Finely executed stars and border. 1873 under the head.

REVERSE— $\frac{1}{4}$ *Dollar Cal*, inside an open wreath, the $\frac{1}{4}$ in open part. Period after *Cal*. Thirteen berries on wreath, six on the left and seven on the right. Plain edge.

No. 69—1873. Indian Head. Thirteen Stars.

First star on left opposite front of neck. 1873 under the head, with a period after. Bottom of the 3 of date severed. Some stars touch border.

REVERSE— $\frac{1}{4}$ *Dollar Cal*, inside an almost closed wreath. **About twenty-six berries on wreath**. Tips of most leaves turn down. Several leaves touch border. **The tip of the upper left leaf turns up, the right leaf turns down**. Plain edge.

No. 70—1873. Indian Head. Thirteen Stars.

OBVERSE—Same as No. 69.

REVERSE— $\frac{1}{4}$ *Dollar Cal*, inside an almost closed wreath. **A small dot, like a period, after *Cal***. **About twenty-two ber-**

ries on wreath. Some berries and leaves touch border. **Tips of both upper leaves turn up.** Plain edge.

No. 71—1874. Small Liberty Head. Thirteen Stars.

Point of neck points to the first star on left. 1874 under the head. Hardly any border on obverse.

REVERSE— $\frac{1}{4}$ *Dollar Cal*, inside an open wreath, the $\frac{1}{4}$ in open part. There are twenty-four leaves and **no berries on wreath.** The reverse has a border. Plain edge.

No. 72—1874. Small Liberty Head. Thirteen Stars.

OBVERSE—Same as No. 71.

REVERSE— $\frac{1}{4}$ *Dollar Cal*, inside an almost closed wreath. **Period after Cal.** The 1 of fraction and the *D* and *O* of *Dollar* appear double cut. **Twelve berries on wreath in pairs**, six on each side. Plain edge.

No. 73—1874. Indian Head. Thirteen Stars.

First star on left opposite front of neck. **Points of two stars and the fourth feather join.** 1874 under the head, the hair touching the 7 and the 4.

REVERSE— $\frac{1}{4}$ *Dollar*, inside an almost closed wreath. The letter *R* of *Dollar* touches a stem and leaf. **About twenty-seven berries on the wreath.** Poorly reeded edge.

No. 74—1874. Indian Head. Thirteen Stars.

First star on left opposite lower part of throat. **The upper feather touches the border.** 1874 under the head.

REVERSE— $\frac{1}{4}$ *Dollar Cal*, inside an almost closed wreath. **About twenty-two berries on the wreath.** Several berries and leaves touch border. Plain edge.

No. 75—1875. Small Liberty Head. Thirteen Stars.

Point of neck points to the first star on left. Point of diadem points just below the seventh star. Most stars touch border. A point of hair extends below the neck. 1875 under the head, the figures out of line and the 5 appearing double cut.

REVERSE— $\frac{1}{4}$ *Dollar Cal*, inside an open wreath, the 1 of fraction in the open part. No berries on wreath. Some letters poorly struck. Plain edge.

No. 76—1875. Indian Head. Thirteen Stars.

First star on left opposite lower part of throat. 1875 under the

head, the 1 deformed and other figures slanting and out of line. Several stars touch border.

REVERSE— $\frac{1}{4}$ *Dollar Cal*, inside an almost closed wreath. Wreath and berries connect with border. Plain edge.

No. 77—1875. Small Indian Head. Thirteen Stars.

First star on left opposite point of neck. **First feather points to, and touches, the seventh star. String of beads around neck.** Beaded band at base of feathers. 1875 under the head, the figures out of line and parts double cut. Small planchet.

REVERSE—Same as No. 75.

No. 78—1876. Small Liberty Head. Thirteen Stars.

First star on left opposite center of throat. Point of neck divides the 1 and 8 of date, almost touching the 8. Point of diadem points to the sixth star. Most stars touch border.

REVERSE— $\frac{1}{4}$ *Dollar Cal*, inside an open wreath. Period after *Cal*. Twelve berries on wreath. Plain edge. *Plate*.

No. 79—1876. Liberty Head. Thirteen Stars.

OBVERSE—Liberty head, thirteen stars, 1876.

REVERSE— $\frac{1}{4}$ *Dollar and a star*, inside a wreath. Reported.

No. 80—1876. Indian Head. Thirteen Stars.

Point of neck points to the lower part of the first star on left. The seventh and tenth stars touch feathers. 1876 under the head, the 7 almost touching the hair.

REVERSE— $\frac{1}{4}$ *Dollar*, inside an almost closed wreath. **About eighteen berries on wreath**, eight on the left and about ten on the right. Several leaves on wreath resemble ears of corn. Plain edge.

No. 81—1876. Indian Head. Thirteen Stars.

Point of neck points to the lower part of the first star on left. Several stars touch border. 1876 under the head, the 7 almost touching the hair.

REVERSE— $\frac{1}{4}$ *Dollar*, inside an almost closed wreath. The 4 of fraction weakly struck. Letter *R* touches a berry. **Twenty-seven berries on wreath**, one missing at the left of the D. Plain edge.

No. 82—1876. Indian Head. Thirteen Stars.

First star on left opposite point of neck. 1876 under the head, the 1 joining the point of neck. The top feather touches the

seventh star. All stars and figures touch or merge into the border. The 8 of date double cut. Small planchet.

REVERSE— $\frac{1}{4}$ *Dollar Cal*, inside an open wreath. **Nineteen or twenty dots to resemble berries.** Poorly reeded edge.

No. 83—1876. Indian Head. Thirteen Stars.

First star on left in front of lower part of throat. 1876 under the head, the 7 touching the hair.

REVERSE— $\frac{1}{4}$ *Dollar Cal*, inside an open wreath. **About twenty-six berries on wreath.** The stems of wreath touch the border, as do also the tips of two leaves on the right. Plain edge.

No. 84—1880. Indian Head. Thirteen Stars.

Point of neck points to the first star on left. 1880 under the head, with a defect inside of the O.

REVERSE— $\frac{1}{4}$ *Dollar*, inside an almost closed wreath. Letter *R* touches a berry. Letters in *Dollar* out of line. About twenty-seven berries on wreath. Some leaves and berries touch the border. Plain edge.

No. 85—1881. Indian Head. Thirteen Stars.

First star on left opposite center of throat. Point of the sixth star touches the top feather. 1881 under the head, both 1's touching the border.

REVERSE— $\frac{1}{4}$ *Dollar*, inside an almost closed wreath. About twenty-seven berries on wreath. The *R* in *Dollar* touches a berry. Several leaves and berries touch the border. Plain edge.

HALF DOLLAR OCTAGON

No. 1—1852. Indian Head. Thirteen Stars.

First star on left opposite center of throat. 1852 under the head. Two points of the sixth star between, and touching, the first and second feathers. The seventh star double cut. Several stars touch border.

REVERSE— $\frac{1}{2}$ *Dollar*, inside an open wreath. About twenty-six berries on wreath. Most tips of leaves turn down. Plain edge.

No. 2—1852. Indian Head. Thirteen Stars.

OBVERSE—Indian head, thirteen stars, 1852.

REVERSE— $\frac{1}{2}$ *Dollar Cal*, inside a wreath. Reported.

No. 3—1853. Liberty Head. Ten Sars—FD.

First star on left opposite point of neck. 1853 and letters FD under the head, the letters and date crude, poorly struck and not square with octagon.

REVERSE—*California* (left and upper left), *Gold* (right), *Two stars* (below), outside a beaded circle. Period after *California* and *Gold*. $\frac{1}{2}$ *Dollar*, inside the circle. No line between fraction. First *I* in *California* large. Some letters crude. Reeded edge.

No. 4—1853. Liberty Head. Thirteen Stars—FD.

Point of neck points to the first star on left. Point of diadem points to the seventh star. Letters FD back of lower part of head and under rolls of the hair, with a period after each letter. 1853, under the head and not square with octagon.

REVERSE—*California*, (left and upper left), *Gold*, (upper right), *Cents*, (lower right), *50*, (below), around coin and next to border. Period after *50*, *Cents* and *Gold*. An eagle, with rays, holding in its talons an arrow, in center of coin. Reeded edge. *Plate*.

No. 4A—1853. Liberty Head. Thirteen Stars—FD.

OBVERSE—Similar to No. 4, except for a die defect on the right border which covers part of the twelfth star and the field between.

REVERSE—Same as No. 4.

No. 5—1853. Indian Head. Thirteen Stars. Reported.

No. 6—1854. Liberty Head. Nine Stars.

First star on left opposite lower part of throat. Point of diadem points between the fourth and fifth stars. 1854 under the head

and not square with octagon. A detached curl in the upper part of the cheek.

REVERSE—*California* (left and upper left), *Gold* (right), *Two Stars*, (below), outside a beaded circle. Period after *California* and *Gold*. $\frac{1}{2}$ *Dollar*, inside the circle. No line between fraction. First *I* in *California* large. Reeded edge.

No. 7—1854. Liberty Head. Ten Stars.

First star on left opposite front of neck. Point of diadem points just above the fifth star. 1854 under the head and not square with octagon.

REVERSE—*FD* (lower left), *California* (upper left), *A star* (upper right), *Gold* (right), *A star* (lower right), all outside a beaded circle. Period after *California* and *Gold*. $\frac{1}{2}$ —*Dollar*, inside the circle. No line between fraction. The *D* and *O* of *Dollar* join as do also the *L* and *I* of *California*. Several letters appear double cut. Poorly reeded edge.

No. 8—1854. Liberty Head. Thirteen Stars.

First star on left below point of neck. Point of diadem points to the sixth star.

REVERSE—*Half* (lower left), *Dol* (upper left), *California* (above), *Gold* and *letter N* (lower right), all outside an open wreath. Period after *Dol* and *N*. *A star—1854*, inside the wreath, the star in open part. Sixteen berries on the wreath in pairs. Reeded edge.

No. 9—1854. Indian Head. Thirteen Stars. Reported.

No. 10—1855. Liberty Head. Eight Stars.

OBVERSE—Liberty head, eight stars.

REVERSE—Value and date inside a beaded circle. Reported.

No. 11—1855. Liberty Head. Thirteen Stars.

OBVERSE—Liberty head, thirteen stars.

REVERSE—*Half Dol California Gold A Star*, around and outside a wreath. Period after *Dol*. 1855, inside the wreath. Reported.

No. 12—1856. Liberty Head. Thirteen Stars.

First star on left opposite point of neck. Point of diadem points between the fifth and sixth stars. Most stars touch border, the fourth star blurring into the border.

REVERSE—*Half* (lower left), *Dol* (upper left), *California* (above and upper right), *Gold* (lower right), *N* (below and between ribbands), all **outside an open wreath**. Period after *Dol* and *N*. *1856* inside the wreath. **Sixteen berries on the wreath in pairs**, a berry directly beneath the left stand of the *N* in *California*, another directly beneath the *D* in *Gold*. Reeded edge.

No. 13—1856. Liberty Head. Thirteen Stars.

OBVERSE—Similar to No. 12, except that the fourth star does not blur into the border.

REVERSE—Similar to No. 12, except that there are **eighteen berries on the wreath**, a berry being centered beneath the *R* of *California* and another between the *L* and *D* of *Gold*. Reeded edge.

No. 14—1856. Liberty Head. Thirteen Stars.

First star on left opposite point of neck. Point of diadem points below the sixth star. Point of twelfth star touches lower curl of hair. Head not square with octagon.

REVERSE—*California* (left), *Gold* (right), outside a **beaded circle**. $\frac{1}{2}$ *Dollar 1856 and a star*, inside the circle. The 1 of fraction merges with a dot at the top, and touches the 2 at the base. No line between fraction. The 2 appears to be double cut. Letters in *Dollar* out of line. Plain edge.

No. 15—1856. Liberty Head. Thirteen Stars—G.

OBVERSE—Liberty head, thirteen stars, letter G under the head.

REVERSE—*Half Dol California Gold N*, around and outside a wreath, *1856*, inside the wreath. Reported.

No. 16—1859. Liberty Head. Eleven Stars.

First star on left opposite center of throat. Point of diadem points between the fourth and fifth stars.

REVERSE— $\frac{1}{2}$ *Dollar 1859*, inside a wide-open wreath. No line between fraction. Most letters and figures poorly struck. About three good berries and an attempt at three more. Poorly reeded edge.

No. 17—1864. Liberty Head. Thirteen Stars—G.

First star on left in front of lower part of throat. Point of the sixth star touches the point of diadem. Letter G under the head.

REVERSE—*Half Dollar 1864*, inside an almost closed wreath. A line between *Dollar* and 1864. Twenty berries on wreath in pairs. Wreath parted in several places. Plain edge. *Plate.*

No. 18—1866. Liberty Head. Eleven Stars.

First star on left opposite center of throat. Point of diadem points between the fourth and fifth stars.

REVERSE—*A Star* beneath and outside an open wreath. $\frac{1}{2}$ *Dollar 1866*, inside the wreath, the $\frac{1}{2}$ in open part. No line between fraction. Nineteen berries on wreath, all in pairs except for the berry missing at the *R* in *Dollar*. A leaf touches the *R*. There is an extra dot by the last berry at the upper left. Reeded edge.

No. 19—1867. Liberty Head. Eleven Stars.

First star on left opposite center of throat. Point of diadem points between the fourth and fifth stars. The eleventh star under the head. Stars crude and small. A curl of hair in the cheek.

REVERSE— $\frac{1}{2}$ *Dollar 1867*, inside an open wreath, the $\frac{1}{2}$ in open part. No line between fraction. No berries on the thin wreath. Letters and figures poorly struck. Plain edge.

No. 20—1868. Liberty Head. Eleven Stars.

First star on left opposite center of throat. Point of diadem points between the fourth and fifth stars.

REVERSE— $\frac{1}{2}$ *Dollar 1868*, inside an open wreath, the $\frac{1}{2}$ in open part. No line between fraction. Six berries on the right wreath, poor attempt at berries on the left wreath. The berry at the left of date has a small dot on top. The last *L*, *A* and *R* of *Dollar* touch. Plain edge.

(NOTE: 1868. Liberty Head—Thirteen Stars. See APPENDIX.)

No. 21—1868. Indian Head. Thirteen Stars.

OBVERSE—Indian head, thirteen stars, 1868.

REVERSE— $\frac{1}{2}$ *Dollar*, inside a wreath. Reported.

No. 22—1869. Liberty Head. Eleven Stars.

First star on left opposite center of throat. Point of diadem points between the fourth and fifth stars.

REVERSE— $\frac{1}{2}$ *Dollar 1869*, inside an open wreath, the $\frac{1}{2}$ in open part. No line between fraction. Eight berries on the wreath

in pairs, four on either side. Upper part of the *R* touches a berry. Plain edge.

No. 23—1869. Liberty Head. Thirteen Stars—G.

First star on left opposite center of throat. Point of diadem points to the sixth star, which is smaller. Letter *G* under the head. REVERSE—*A star Cal Gold Half Dol 1869*, inside an open wreath, the star in open part. Period after *Cal*. The 8 in date weak. Poorly reeded edge.

No. 24—1870. Liberty Head. Eleven Stars.

First star on left opposite center of throat. Point of diadem points between the fifth and sixth stars.

REVERSE— $\frac{1}{2}$ *Dollar 1870*, inside an open wreath, the $\frac{1}{2}$ in open part. Twelve berries on wreath, five on the left and seven on the right. A small berry above, and touching, the *R*. Reeded edge.

No. 25—1870. Liberty Head. Thirteen Stars.

Point of neck points to the first star on left. Point of diadem points to the sixth star.

REVERSE— $\frac{1}{2}$ *Dollar 1870*, inside an open wreath. The line between fraction on an angle. The $\frac{1}{2}$ is just below the open part. Plain edge.

No. 26—1870. Liberty Head. Thirteen Stars—G.

First star on left opposite center of throat. Point of diadem points to the sixth star, which is smaller. Letter *G* under the head.

REVERSE—*A star Cal Gold Half Dol 1870*, inside an open wreath, the star in open part. A dot between the upper part of *Cal* and *Gold*. All letter *L*'s large. The *H* in *Half* touches a stem. Poor attempt at berries. Reeded edge.

No. 27—1870. Liberty Head. Thirteen Stars—G.

Point of neck points to the lower part of the first star on left. point of diadem points just above the sixth star. Homely face. Letter *G* under the head. A wide, almost plain border.

REVERSE—*A star Half Dollar 1870*, inside an open wreath, the star in open part. Six berries on wreath without stems. Letters in *Dollar* out of line. Reeded edge. *Plate*.

No. 28—1870. Liberty Head. Thirteen Stars—G.

First star on left opposite the front of neck. Point of diadem points between the sixth and seventh stars. 1870 and letter G under the head, the G close to the head. The 1 of date double cut at base.

REVERSE—*A star Half Dollar Cal*, inside an open wreath, the star in open part. Would be sixteen berries if all were properly struck. Some stems to berries missing. A berry like a period beneath the *L* in *Cal*. Reeded edge. *Plate*.

No. 29—1870. Indian Head. Thirteen Stars. Reported.**No. 30—1871. Liberty Head. Eight Stars.**

First star on left opposite center of throat. Fourth star almost touches hair back of diadem.

REVERSE— $\frac{1}{2}$ *Dollar 1871*, inside an open wreath, the $\frac{1}{2}$ in open part. No line between fraction. The *D* and *R* in *Dollar* touch wreath. Eight berries on wreath, five on the left and three on the right. Poorly reeded edge.

No. 31—1871. Liberty Head. Nine Stars.

First star on left opposite upper part of throat. Point of diadem points to the fourth star. A curl extends above the back roll of hair.

REVERSE—Same as No. 30. Plain edge. *Plate*.

No. 32—1871. Liberty Head. Eleven Stars.

First star on left opposite center of throat. Point of diadem points between the fourth and fifth stars.

REVERSE— $\frac{1}{2}$ *Dollar 1871*, inside a wide-open wreath, the $\frac{1}{2}$ in open part. No line between fraction. The *D* and *R* in *Dollar* touch the wreath. Eight berries on wreath, five on the left and three on the right. Poorly Reeded edge.

No. 33—1871. Liberty Head. Thirteen Stars—G.

First star on left opposite point of neck. Point of diadem points between the sixth and seventh stars. 1871 and letter G under the head.

REVERSE—*A star Half Dollar Cal*, inside an open wreath, the star in open part. **Nine berries on wreath**, four on the left and five on the right. Reeded edge.

No. 34—1871. Liberty Head. Thirteen Stars—G.

OBVERSE—Same as No. 35.

REVERSE—Similar to No. 35, except that there are only **seven berries on the wreath**, four on the left and three on the right.

No. 35—1871. Liberty Head. Thirteen Stars—G.

Point of neck points to the first star on left. 1871 and letter G under the head, **the lower part of the G defective**. The 7 in date crooked.

REVERSE—*A star Half Dollar Cal*, inside an open wreath, the star in open part. **Ten berries on wreath**. Poorly reeded edge.

No. 36—1871. Liberty Head. Thirteen Stars—L.

OBVERSE—Same as No. 37.

REVERSE—*A star Half Dollar Cal*, inside an open wreath, the star in open part. **Six berries on wreath**, four on the left and two on the right. There is a stem, but no berry, **on the inside lower right wreath**. Plain edge.

No. 37—1871. Liberty Head. Thirteen Stars—L.

Point of neck points to first star on left. Point of diadem points between the sixth and seventh stars. 1871 and letter L under the head, the L almost touching the head.

REVERSE—*A star Half Dollar Cal*, inside an open wreath, the star in open part. **Ten berries on wreath**. The *F* in *Half* almost touches a leaf. Poorly reeded edge.

No. 38—1871. Indian Head. Thirteen Stars. Reported.**No. 39—1872. Liberty Head. Thirteen Stars.**

First star on left opposite lower part of throat. Point of diadem points to the sixth star. 1872 under the head.

REVERSE—*A star Half Dollar Cal*, inside an open wreath, the star in open part. Period after *Cal*. No berries on wreath. The *O* and upper part of the first *L* in *Dollar* are double cut. Poorly reeded edge.

No. 40—1872. Liberty Head. Thirteen Stars—L.

OBVERSE—Liberty head, thirteen stars, 1872 and letter L under the head.

REVERSE—*A star Half Dollar Cal*, inside an open wreath, the star in open part. Reported.

No. 41—1872. Washington Head. Thirteen Stars.

First star on left opposite lower part of throat. Lower point of the eighth star points above the slight break in hair. Lower right star opposite the lower point of hair. Small stars. Small 1872 under the head, the top of the 7 double cut.

REVERSE—*A star* (left), *California* (above), *A star* (right), *Charm* (below), around coin and next to border. Period after *Charm*. $\frac{1}{2}$ *Gold*, in center of coin. Tip of the 1 in fraction points between the *F* and *O* in *California*, being just to the left of the *O*. Poorly reeded edge. *Plate*.

No. 42—1872. Indian Head. Thirteen Stars.

OBVERSE—Similar to No. 43 except that the stars are large and crude, the date is further from the border and a point of the sixth star merges into the first feather.

REVERSE— $\frac{1}{2}$ *Dollar Cal*, inside an open wreath. Period after *Cal*. **Twenty-two berries on wreath. Plain edge.**

No. 43—1872. Indian Head. Thirteen Stars.

First star on left opposite lower part of throat. Sixth star touches the first feather. Stars small. 1872 under the head.

REVERSE— $\frac{1}{2}$ *Dollar Cal*, inside an almost closed wreath. **Twenty-six berries on a heavy wreath**, twelve on the left and fourteen on the right. Period after *Cal*. Plain edge.

No. 44—1873. Liberty Head. Thirteen Stars.

First star on left opposite lower part of throat. Point of diadem points to the lower part of the sixth star. 1873 under the head, the 1 almost touching the neck. Slight die defect at the eye and cheek.

REVERSE—*A star Half Dollar Cal*, inside an open wreath, the star in the open part. Period after *Cal*. No berries on wreath. The *O* and upper part of the first *L* in *Dollar* double cut. Plain edge.

No. 45—1873. Indian Head. Thirteen Stars.

Point of neck points to the first star on left. The third feather touches a star. 1873 under the head, **a period after the date**. The second and sixth stars double cut. Several stars touch the border.

REVERSE— $\frac{1}{2}$ *Dollar Cal*, inside an almost closed wreath. Tips of most leaves turn down, one touching the top of the *D* in *Dollar*. **About twenty-six berries on wreath.** Plain edge.

No. 46—1873. Indian Head. Thirteen Stars.

First star on left opposite point of neck. The sixth star connects with the first feather. 1873 under the head, the figures crude and, for the most part, poorly made.

REVERSE— $\frac{1}{2}$ *Dollar Cal*, inside an open wreath, the 1 below the open part. Small period after *Cal*. **Twenty-two berries on a poorly-executed wreath**, eleven on each side. Plain edge.

No. 47—1874. Liberty Head. Thirteen Stars.

OBVERSE—Liberty head, thirteen stars, 1874. Wide date.

REVERSE— $\frac{1}{2}$ *Dollar Cal*, inside a wreath. Reported.

No. 48—1874. Indian Head. Thirteen Stars.

First star on left opposite lower part of throat. **First feather points to the sixth star.** 1874 under the head, with a large croslet 4 touching the border.

REVERSE— $\frac{1}{2}$ *Dollar Cal*, inside an almost closed wreath. **About twenty berries on wreath.** Plain edge. *Plate*.

No. 49—1874. Indian Head. Thirteen Stars.

First star on left opposite point of neck. **The third feather points to the seventh star.** All stars touch, or nearly touch, the border, except the three in front of the face. 1874 under the head and touching the border.

REVERSE— $\frac{1}{2}$ *Dollar Cal*, inside an almost closed wreath. **About twenty-six berries on wreath.** Tips of most leaves turn down. Poorly reeded edge.

No. 50—1875. Indian Head. Thirteen Stars.

OBVERSE—Indian head, thirteen stars, 1875.

REVERSE— $\frac{1}{2}$ *Dol Cal*, inside a wreath. Reported.

No. 51—1875. Indian Head. Thirteen Stars.

First star on left opposite lower part of throat. Point of neck points to the top of the 1 of date. The date merges with the border, as do also several stars.

REVERSE— $\frac{1}{2}$ *Dollar Cal*, inside an open wreath. About eighteen berries on wreath. The 2 of fraction touches the line between. Plain edge.

No. 52—1875. Indian Head. Thirteen Stars.

First star on left opposite center of throat. 1875 under the head, the 5 double cut and the 8 smaller than the other figures.

REVERSE— $\frac{1}{2}$ *Dollar Cal*, inside an open wreath. Attempt at twenty berries. The 2 in fraction touches the line between. Plain edge.

No. 53—1875. Indian Head. Thirteen Stars.

Point of neck points to the first star on left. First feather points to the lower part of the sixth star. 1875 under the head.

REVERSE— $\frac{1}{2}$ *Dollar Cal*, inside an open wreath. Twenty berries on wreath, with another berry, or dot, at the upper left of the 1 of fraction. Several points of the sawtooth border touch berries and the tips of leaves. Below, and to the right of, the *L* in *Cal* is a stem as a cross. Plain edge. *Plate*.

No. 54—1875. Indian Head. Thirteen Stars.

Point of neck points to the first star on left. First feather points between the fifth and sixth stars. 1875 under the head and touching the border. The 1 of date double cut.

REVERSE— $\frac{1}{2}$ *Dollar Cal*, inside an almost closed wreath. About twenty berries on wreath. Plain edge.

No. 55—1876. Liberty Head. Thirteen Stars.

First star on left opposite point of neck, which points to the 1 of date. 1876 under the head. The sixth star merges with the point of diadem. The stars appear as five-leaved clovers.

REVERSE— $\frac{1}{2}$ *Dollar Cal*, inside an open wreath. Attempt at twenty berries. The right stem of the wreath touches the border. The *C* and *A* of *Cal* appear double cut. Poorly reeded edge.

No. 56—1876. Liberty Head. Thirteen Stars.

OBVERSE—Liberty head, thirteen stars, 1876, the 6 struck over a 5. Reported.

No. 57—1876. Indian Head. Thirteen Stars.

First star on left opposite upper part of throat. 1876 under the head. The three upper stars smaller than the others. The star in front of the first feather is very crudely struck.

REVERSE— $\frac{1}{2}$ *Dollar Cal*, inside an open wreath. About twenty-eight berries on wreath. The *D* in *Dollar* touches two leaves.

Tips of most leaves turn down, two on the right touching the border. Plain edge.

No. 58—1878. Indian Head. Thirteen Stars.

First star on left opposite lower part of throat. Tips of several feathers turn down. Point of the sixth star merges into the border. 1878 under the head, the second 8 crude with much of the lower loop missing. The 7 of date large.

REVERSE— $\frac{1}{2}$ *Dollar Cal*, inside an almost closed wreath, the 1 in open part. Would be about twenty-eight berries on wreath if all were struck up. Tips of end leaves turn up, while tips of most other leaves turn down. Leaves touch the upper and lower part of the *D* in *Dollar*. Plain edge.

No. 59—1880. Indian Head. Thirteen Stars.

First star on left opposite lower part of throat. First feather points to the sixth star. 1880 under the head.

REVERSE— $\frac{1}{2}$ *Dollar*, inside an open wreath. About twenty-five berries on the wreath. Tips of most leaves turn down, end leaves turn up. Plain edge.

No. 60—1881. Indian Head. Thirteen Stars.

OBVERSE—Indian head, thirteen stars, 1881.

REVERSE— $\frac{1}{2}$ *Dollar Cal*, in wreath. Reported.

No. 61—1881. Liberty Head. Thirteen Stars.

Point of neck points to the first star on left. Point of diadem points to the sixth star. Small, odd head with the hair ending in strings back of the neck. 1881 under the head.

REVERSE— $\frac{1}{2}$ *Cal Doll and a star*, inside an open wreath, the 1 of fraction in open part. No berries on wreath. Plain edge.

HALF DOLLAR ROUND

No. 1—1852. Liberty Head. Thirteen Stars.

Point of neck points downward to the upper part of the first star on left. Point of diadem points above the sixth star.

REVERSE—*Half Dol. California Gold*, around and outside an open wreath. Period after *Dol* and *Gold*. Large 1852 inside the wreath. Twenty berries on wreath, three on each end of wreath. Reeded edge. *Plate*.

No. 2—1852. Liberty Head. Thirteen Stars—D.N.

Point of neck points downward to the upper part of the first star on left. Point of diadem points just above the sixth star. Letters D.N. under the head, a period after each.

REVERSE—Same as No. 1.

No. 3—1852. Indian Head. Thirteen Stars.

First star on left opposite lower part of throat. The three upper stars very close together. A die defect in front part of throat and chin.

REVERSE— $\frac{1}{2}$ *Dollar*, inside an open wreath. Large fraction. Twenty-eight berries on wreath, some appearing as clubs. Plain edge.

No. 4—1853. Liberty Head. Ten Stars.

OBVERSE—Liberty head, ten stars.

REVERSE—*California Gold Half D* (outside), 1853 (inside), a wreath. Reported.

No. 5—1853. Liberty Head. Ten Stars—D.

OBVERSE—Liberty head, ten stars, **letter D under the head**.

REVERSE—*California Gold Half D* (outside), 1853 (inside), a wreath. Reported.

No. 6—1853. Liberty Head. Eleven Stars—D.

First star on left just above, and almost touching, point of neck. Diadem points between the fifth and sixth stars. Eighth star almost touches upper roll of hair. A dot inside the letter D under the head.

REVERSE—*California Gold Half D*, around and outside an almost closed wreath. Large 1853 inside the wreath. Twenty-three small dots for berries, mostly without stems. A berry in upper left is

double. Letters in inscription crudely struck. Wreath severed in several places. Reeded edge.

No. 6-A—1853. Liberty Head. Eleven Stars—D.

OBVERSE—Similar to No. 6 but has peculiar die defects throughout the field. Appears to have been struck over another coin.

REVERSE—Similar to No. 6 but shows the same peculiar defects.

No. 7—1853. Liberty Head. Twelve Stars.

First star on left above, and resting upon, the point of neck. The eighth star touches upper roll of hair. Lower point of hair in back of neck almost touches a star. The stars crude. REVERSE—*Half D California Gold*, around and outside an open wreath. **Period after the first D.** 1853 inside the wreath. Very small wreath with only **five berries**, three on the right and two on the left. The *F* in *California* double cut. Reeded edge.

No. 8—1853. Liberty Head. Twelve Stars.

Point of neck touches the upper part of the first star on left. Point of diadem points between the fifth and sixth stars. The eighth star touches the upper roll of hair.

REVERSE—*California Gold Half D*, around and outside an almost closed wreath. Most letters crude. 1853, inside the wreath. **Twenty-three berries on wreath**, mostly without stems. Reeded edge. *Plate.*

No. 9—1853. Liberty Head. Twelve Stars—DN.

OBVERSE—Liberty head, twelve stars, letters DN under the head.

REVERSE—*Half D California Gold*, around and outside the wreath. Large 1853, inside the wreath. Reported.

No. 10—1853. Liberty Head. Thirteen Stars.

First star on left beneath head, point of neck points to the lower part of the second star. **Point of diadem points half-way between the sixth and seventh star.**

REVERSE—*Half Dol California Gold*, around and outside an open wreath. A star, beneath ribbands. Period after *Dol*. Large 1853, inside the wreath. **Sixteen berries on wreath**, two extending from the tips of the wreath. **Sawtooth border.** Reeded edge.

No. 11—1853. Liberty Head. Thirteen Stars.

First star on left beneath neck, the second star opposite the lower part of throat. **Point of diadem points to the upper part of the sixth star.**

REVERSE—*Half Dol California Gold*, around and outside an open wreath. A star, beneath ribbands. Period after *Dol*. Large 1853, inside the wreath. The first *A* in *California* short and the *G* in *Gold* crude. **Twenty berries on the wreath. Beaded border.** Reeded edge.

No. 12—1853. Liberty Head. Thirteen Stars.

OBVERSE—Similar to No. 10 except that the thirteenth star connects with the border. Also, there is a slight die defect in the lower part of the face. **This coin, however, has a beaded border.**

REVERSE—Same as No. 11.

No. 13—1853. Liberty Head. Thirteen Stars.

OBVERSE—Liberty head, thirteen stars.

REVERSE—*California Gold Half Dol* (outside), 1853 (inside), a wreath. Reported.

No. 14—1853. Liberty Head. Thirteen Stars.

OBVERSE—Liberty head, thirteen stars.

REVERSE—*California Gold* (above), 18-53 (below), outside a wreath. The date is divided by the stems of the wreath. $\frac{1}{2}$ *Dollar*, inside the wreath. Reported.

No. 15—1853. Liberty Head. Thirteen Stars—D.

OBVERSE—Liberty head, thirteen stars, letter D under the head.

REVERSE—*California Gold Half D* (outside), 1853 (inside), a wreath. Reported.

No. 16—1853. Liberty Head. Thirteen Stars—D.N.

OBVERSE—Liberty head, thirteen stars, letters DN under the head.

REVERSE—*Half D California Gold* (outside), 1853 (inside), a wreath. **Top of the 3 in date flat.** Reported.

No. 17—1853. Small Liberty Head. Thirteen Stars—D.N.

First star on left below point of neck. Letters D.N. under the

head, a period after each. The N touches the hair. Point of diadem points just above the sixth star.

REVERSE—*Half Dol. California Gold*, around and outside an open wreath. Period after *Dol.* Large 1853 inside the wreath. About twenty dots for berries. Reeded edge.

No. 18—1853. Small Liberty Head. Thirteen Stars—D.N.

OBVERSE—Similar to No. 19 with the addition of a cracked planchet from the border into the first star on left and a die break continuing up through the second star and almost to the third star.

REVERSE—*Half Dol. California Gold*, around and outside an open wreath. Period after *Dol.* Large 1853 inside the wreath. A bad die break and planchet defect on the right and upper part of the coin. Reeded edge. (This particular specimen unique, as there are two distinct kinds of gold—red and yellow. On the reverse, the two kinds are partially separated by the die breaks and defect on the right.)

No. 19—1853. Liberty Head. Thirteen Stars.

OBVERSE—Liberty head, thirteen stars.

REVERSE—*Half Dol California Gold, A star*, around and outside a wreath, **the star below the wreath.** 1853, inside the wreath. Reported.

No. 20—1853. Liberty Head. Thirteen Stars—G.G.

First star on left below, and to the left of, the first G under head. Letters G.G. under the head, a period after each. Point of diadem points between the sixth and seventh stars.

REVERSE—*California* (upper left), *Gold* (upper right), *1853* (below), outside an open wreath. $\frac{1}{2}$ *Dollar*, inside the wreath, the $\frac{1}{2}$ in open part. Period after *Gold*. The figures of the date divided by the ribbands and stems of the wreath. The *R* in *Dollar* touches a leaf. About fifteen berries on the wreath, the berry at the upper left double. The bottom of the *O* in *California* is open, as is also the top of the 8 in date. Reeded edge. *Plate.*

No. 21—1853. Arms of State. Thirteen Stars.

Female seated left, bear at side, mountains in the background, all inside a plain, raised circle. 1853 and thirteen stars, between

the circle and border, the date below. The date is curved with the circle, the 8 touching, the 1 and 3 almost touching, and the 5 further away.

REVERSE—*California* (upper left and above), *Gold* (upper right), *Half Dollar* (lower left, below and lower right), outside a plain, raised circle. A dot between the *H* of *Half* and the *C* of *California*. Another dot between the *D* of *Gold* and the *R* of *Dollar*. An eagle holding in its beak a scroll, in its talons a shield and laurel branch, inside the circle. Reeded edge. *Plate*.

No. 22—1854. Liberty Head. Eleven Stars.

OBVERSE—Liberty head, eleven stars, 1854.

REVERSE—*Half Dol. California Gold* (above), *A star* (below), around and outside a wreath. Period after *Dol*. **The wreath itself blank.** Reported.

No. 23—1854. Liberty Head. Eleven Stars—D.

OBVERSE—Large liberty head, eleven imperfect stars, letter *D* under the head.

REVERSE—*Half D California Gold* (outside), 1854 (inside), a wreath. Reeded edge. Reported.

No. 24—1854. Liberty Head. Thirteen Stars.

OBVERSE—Liberty head, thirteen stars.

REVERSE—*California Gold Half Dol* (outside), 1854 (inside), a wreath. Plain edge. Reported.

No. 25—1854. Liberty Head. Thirteen Stars.

First star on left below neck, second star opposite point of neck. Point of diadem points between the fifth and sixth stars. Small stars, several of which touch border.

REVERSE—*Half* (left), *Dol* (above), *1854* (right), around coin and next to border. Period after *Dol* and *1854*. An eagle, with spreading wings, arrows and a shield, in center of coin. A die defect above the period after *Dol* makes it look like an exclamation mark. Letters and figures crude. Reeded edge. *Plate*.

No. 26—1854. Liberty Head. Fourteen Stars.

OBVERSE—Liberty head, fourteen stars.

REVERSE—*California Gold Half Dol* (outside), *1854 and the letter D* (inside), a wreath. Reported.

(*Note—1854. Small Liberty Head. Fourteen Stars. See Appendix.*)

No. 27—1855. Liberty Head. Eleven Stars.

OBVERSE—Liberty head, eleven stars.

REVERSE— $\frac{1}{2}$ *Dollar 1855*, inside a wreath. Reported.

No. 28—1855. Large Liberty Head. Twelve Stars—FD.

First star on left opposite lower part of throat. Point of neck has a slight die break pointing below the first star on left. Point of diadem points above the fifth star. Letters FD on coronet.

REVERSE— $\frac{1}{2}$ *Dollar 1855*, inside a wide-open wreath, the $\frac{1}{2}$ in open part. No line between fraction, the figures small. Letters and date also small. The *D* and *A* in *Dollar* weakly struck, also the 8 and first 5 in date. Nineteen berries without stems on wreath. Wreath parted in several places. Reeded edge.

No. 29—1855. Liberty Head. Thirteen Stars.

First star on left opposite center of throat. Point of diadem points between the fifth and sixth stars. Ninth star almost touches upper roll of hair.

REVERSE—*Half Dol. California Gold*, around and outside an open wreath. Period after *Dol*. A star between the ribbands. Small 1855 inside the wreath. First *A* in *California* blurred, as are also several leaves of the wreath. About twenty berries on wreath. Reeded edge.

No. 30—1855. Indian Head. Thirteen Stars. Reported.

No. 31—1856. Liberty Head. Twelve Stars.

First star on left opposite center of throat. Point of diadem points between the fifth and sixth stars. The eighth star touches upper roll of hair. The ninth and eleventh stars almost touch hair.

REVERSE—*Half Dol. California Gold*, around and outside an open wreath. Period after *Dol*. The letter *N*, with a period after, between the ribbands below the wreath. Small 1856 inside the wreath. Sixteen berries on wreath in pairs. Reeded edge.

No. 32—1859. Liberty Head. Nine Stars.

First star on left opposite point of neck. Point of diadem points above the fourth star. Ninth star under the head. A single curl in upper part of the cheek.

REVERSE— $\frac{1}{2}$ *Dollar 1859*, inside an open wreath, the 1 above the wreath. No line between fraction. The 1 of fraction large, the 2 small. Letters and figures crude. Fifteen berries on wreath, seven on the left and eight on the right, all without stems. Poorly reeded edge.

No. 33—1859. Liberty Head. Eleven Stars.

First star on left below head, the second star opposite the center of the throat. Point of diadem points to the upper part of the fifth star.

REVERSE— $\frac{1}{2}$ *Dollar 1859*, inside an open wreath, the $\frac{1}{2}$ in open part. No line between fraction. The second *L* in *Dollar* large and out of line. The *A* and *R* in *Dollar* double cut and the right stand of the *R* touches a leaf. About fifteen berries distinguishable. Reeded edge.

No. 34—1859. Liberty Head. Twelve Stars—FD.

A slight die defect on the point of neck points just below the first star on left. Letters FD on the coronet.

REVERSE—Similar to No. 33, except that the *R* does not touch the wreath.

No. 35—1859. Liberty Head. Thirteen Stars.**No. 36—1860. Liberty Head. Twelve Stars.**

OBVERSE—Liberty head, twelve stars.

REVERSE—*Half Dol California Gold*, around and outside a wreath. 1860, inside the wreath. Reported.

No. 37—Small Liberty Head. Stars (not known).

OBVERSE—Small liberty head, date under the head. Milled edge. Reported.

No. 38—1864. Liberty Head. Thirteen Stars.

First star on left below neck, point of neck points below the second star. Point of diadem points just above the sixth star. Most stars touch border.

REVERSE—*A Star Half Dollar 1864*, inside an open wreath, the star in open part. No berries on wreath. All three letter *L*'s large. The *F* in *Half* almost an *E*. Plain edge.

No. 39—1865. Liberty Head. Nine Stars.

OBVERSE—Liberty head, nine stars.

REVERSE— $\frac{1}{2}$ *Dollar 1865*, inside a wreath. Reported.

No. 40—1866. Liberty Head. Ten Stars.

OBVERSE—Liberty head, ten stars.

REVERSE— $\frac{1}{2}$ *Dollar 1866*, inside a wreath. Reported.

No. 41—1867. Liberty Head. Ten Stars.

First star on left in front of lower part of throat. Point of upper star touches the border.

REVERSE— $\frac{1}{2}$ *Dollar 1867*, inside an open wreath, the $\frac{1}{2}$ in open part. No line between fraction. About twenty berries on wreath. Part of the base missing on the 2 of fraction. Some leaves of the wreath blurred. Reeded edge.

No. 42—1867. Liberty Head. Thirteen Stars—G.

OBVERSE—Liberty head, thirteen stars, letter *G* under the head.

REVERSE— $\frac{1}{2}$ *Dollar 1867*, inside a wreath. Reported.

No. 43—1867. Liberty Head. Thirteen Stars—G.

OBVERSE—Liberty head, thirteen stars, letter *G* under the head.

REVERSE—*A Star Half Dollar 1867*, inside a wreath. Reported.

No. 44—1868. Liberty Head. Ten Stars.

First star on left opposite lower part of throat. Point of diameters above the fourth star.

REVERSE— $\frac{1}{2}$ *Dollar 1868*, inside a wide-open wreath, the $\frac{1}{2}$ in open part. No line between fraction. A semblance of about fourteen crude berries on the wreath, about seven on either side, one appearing as a period after the last 8 of date. Plain edge.

No. 45—1868. Liberty Head. Thirteen Stars—G.

First star on left opposite upper part of throat. Point of diameters between the sixth and seventh stars. No stars in lower part of field. Letter *G* under head.

REVERSE—*A star Half Dollar 1868*, inside an open wreath, the

star in the open part. The 8, 6 and 8 of date weakly struck. Twenty-four berries on the wreath. Reeded edge.

No. 46—1868. Indian Head. Thirteen Stars.

OBVERSE—Indian head, thirteen stars.

REVERSE— $\frac{1}{2}$ *Dollar*, in wreath. Reported.

No. 47—1869. Liberty Head. Ten Stars.

First star on left opposite lower part of throat. Four stars on the left, six on the right. The fifth star touches the border.

REVERSE— $\frac{1}{2}$ *Dollar 1869*, inside an open wreath, the $\frac{1}{2}$ in open part. The *D* and *O* of *Dollar* poorly struck. The *R* lower and out of line. One small berry opposite upper part of the *R*, and there are eight berries in all. No line between fraction. Most of border missing. Poorly reeded edge.

No. 48—1869. Liberty Head. Thirteen Stars—G.

First star on left opposite upper part of throat. The six stars on the left are slightly smaller than those on the right. No stars in lower part of the field. Letter *G* under head. Point of diadem points between the sixth and seventh stars.

REVERSE—*A star Half Dollar 1869*, inside an open wreath, the star in open part. Eighteen berries on the wreath, one at either point. Poorly reeded edge.

No. 49—1869. Liberty Head. Thirteen Stars—G.

First star on left below front part of neck, point of neck points just below the second star. Letter *G* under head. Point of diadem points between the sixth and seventh stars.

REVERSE—Same as No. 48.

No. 50—1870. Liberty Head. Ten Stars.

First star on left in front of lower part of throat. Four stars on the left, six on the right. Point of uppermost star touches border.

REVERSE— $\frac{1}{2}$ *Dollar 1870*, inside an open wreath, the $\frac{1}{2}$ in open part. No line between fraction. Four berries on the left wreath, seven on the right. Last part of the second *L* in *Dollar* makes part of the *A*. A slight defect, like a dot, in the field above the right part of the *A*. The *D* touches the wreath and the *R* touches a berry. The 2 in fraction poorly executed. Upper leaf of right wreath detached. Poorly reeded edge. *Plate*.

No. 51—1870. Liberty Head. Thirteen Stars.

First star on left in front of lower part of throat. The sixth star is directly above the point of diadem.

REVERSE— $\frac{1}{2}$ *Dollar 1870*, inside an open wreath, the $\frac{1}{2}$ in open part. Slanting line between fraction. Twenty berries on wreath in pairs, the last berry on the upper left faintly visible. Reeded edge. *Plate.*

No. 52—1870. Liberty Head. Thirteen Stars—G.

Point of neck points to the first star on left. 1870 and letter G under the head.

REVERSE—*A star Half Dollar Cal*, inside an open wreath, the star in open part. Period after *Cal*. No berries on wreath. Poorly reeded edge.

No. 53—1871. Liberty Head. Ten Stars.

First star on left in front of lower part of throat. Point of upper star touches the border. Stars crude.

REVERSE— $\frac{1}{2}$ *Dollar 1871*, inside a small open wreath, the $\frac{1}{2}$ in open part. No line between fraction. No berries on wreath. Plain edge. *Plate.*

No. 54—1871. Liberty Head. Thirteen Stars—G.

Point of neck points to the upper part of the first star on left. Point of diadem points in front of the seventh star. 1871 and letter G under the head.

REVERSE—*Half Dollar Cal*, inside an open wreath. **Period after Cal. Nine berries on wreath**, four on the left and five on the right. Plain edge.

No. 55—1871. Liberty Head. Thirteen Stars—G.

Point of neck points to the first star on left. 1871 and letter G under the head. Point of diadem in front of the seventh star.

REVERSE—*A star Half Dollar Cal*, inside an open wreath, the star on open part. Upper part of the *R* tips towards the *A* and appears double cut. **Ten berries on wreath, the stem on the right center having two berries.** Letters out of line. Plain edge.

No. 56—1871. Liberty Head. Thirteen Stars—G.

OBVERSE—Same as No. 55.

REVERSE—*A star Half Dollar Cal*, inside an open wreath, the star in open part. The *R* of *Dollar* tips away from the *A*. **Eleven berries on wreath, two beneath the word *Cal*.** Letters out of line. Plain edge.

(Note: For 1871. Liberty Head. Thirteen Stars—H. See Appendix.)

No. 57—1871. Liberty Head. Thirteen Stars—L.

Point of neck points to the first star on left. 1871 and letter L under the head, the L close to the head. Point of diadem points above the sixth star. A die defect under the 1 and between the 8 and 7 of date.

REVERSE—*A star Half Dollar Cal*, inside an open wreath, the star in open part. The *D* and *R* of *Dollar* out of line. Six berries on wreath, two on the left and four on the right. The two berries on the left wreath are on the outside. Plain edge. *Plate*.

No. 58—1872. Liberty Head. Thirteen Stars.

First star on left opposite lower part of throat. Point of diadem points above the sixth star. 1872 under the head, the figures out of line.

REVERSE—*A star Half Dollar Cal*, inside an open wreath, the star above the open part. Period after *Cal*. The *H* of *Half* not struck up. No berries on the wreath. Plain edge.

No. 59—1872. Indian Head. Thirteen Stars.

First star on left in front of lower part of throat. Point of the sixth star touches the second feather. 1872 under the head, the lower right of the 2 touching the border. Small stars.

REVERSE— $\frac{1}{2}$ *Dollar Cal*, inside an almost closed wreath, the 1 below the open part. Period after *Cal*. Twenty-six berries on wreath in pairs, twelve on the left and fourteen on the right. Reeded edge.

No. 59A—1872. Indian Head. Thirteen Stars.

OBVERSE—Similar to No 59, except that the stars are large and blunt, several stars are double cut and the sixth star touches the border as well as the second feather.

REVERSE—Same as No. 59.

No. 60—1872. Indian Head. Thirteen Stars.

First star on left opposite lower part of throat. Points of the sixth star touch the second feather and the border. Several stars double cut, the twelfth star very crude. All stars large. 1872 under the head, **the 2 between periods.** This peculiar defect makes the 2 appear very crude. Several of these same "periods," or extra dots, appear on the Indian head, three or four in the lower part of the hair—several on the end of the nose and on the mouth—and several around the eye. A distinct die break runs from the border, between the 1 and 8 of date, to the ear.

REVERSE—Same as No. 59.

(NOTE: The obverse die of this variety has evidently been re-cut. It is without question the same die as No. 59A, for even the die break shows on that specimen also.)

No. 61—1873. Liberty Head. Ten Stars.

First star on left opposite lower part of throat and point of neck. Point of diadem points between the fourth and fifth stars. A point of the fifth star touches the border. Stars small and crude.

REVERSE— $\frac{1}{2}$ Dollar 1873, inside an open wreath, the $\frac{1}{2}$ in open part. A period after the date. Seven berries on wreath, three on the left and four on the right. Small wreath. Plain edge.

No. 62—1873. Liberty Head. Thirteen Stars.

Point of neck points to the first star on left. Point of diadem points between the sixth and seventh stars. The second, seventh and tenth stars larger than the others. 1873 under the head.

REVERSE—*Half Dollar Cal*, inside an open wreath. Eight berries on the wreath, six being on the outside and only two on the inside, opposite either side of the word *Cal*. Points of the upper leaves sharp and close together. Plain edge.

No. 63—1873. Indian Head. Thirteen Stars.

Point of neck points to the upper part of the first star on left. Stars large and crude, with several touching the border. Small 1873 under the head, with a period after.

REVERSE— $\frac{1}{2}$ Dollar *Cal*, inside an almost closed wreath. Small period after *Cal*. Twenty-six berries on the wreath in pairs, twelve on the left and fourteen on the right. A berry on either

side of the *l* of fraction. A berry by the right stand of the *R*, another by the center of the *D*. Plain edge.

No. 64—1874. Liberty Head. Thirteen Stars.

Point of neck points to the first star on left. **Point of diadem points below the seventh star, which is blunt.** 1874 under the head, **the base of the 4 touching the border.**

REVERSE—Same as No. 62.

No. 65—1874. Liberty Head. Thirteen Stars.

Point of neck points to the first star on left. **Point of diadem points to the upper part of the sixth star.** 1874 under the head, **the 1 touching the border,** the 4 small, thick and blunt and the 1 and 7 appear double cut.

REVERSE—Same as No. 62.

No. 66—1874. Indian Head. Thirteen Stars.

Point of neck points to the first star on left. Point of the sixth star between the first and second feathers. The sixth and seventh stars touch the border. 1874 under the head.

REVERSE— $\frac{1}{2}$ *Dollar Cal*, inside an almost closed wreath. **Twenty berries on a heavy wreath,** the wreath merging into the border. Most tips of leaves curl down. The lower right leaf touches the *L* of *Cal*. Plain edge.

No. 67—1874. Indian Head. Thirteen Stars.

Point of neck points to the lower part of the first star on left. **First feather points to, and touches, the sixth star.** The fifth feather connects to the ninth star by a distinct die break. 1874 under the head, the 4 tipped slightly backwards. Both the 7 and 4 of date are under the hair.

REVERSE—Same as No. 66.

No. 68—1874. Indian Head. Thirteen Stars.

Point of neck points to the first star on left. The sixth star is between the first and second feather, the third feather pointing to the seventh star. Several stars connect with border. A distinct die break connects a point of the third star with the chin. 1874 under the head, the 1 and 4 touching the wide, sawtooth border.

REVERSE— $\frac{1}{2}$ *Dollar Cal*, inside an almost closed wreath. **Very small period after Cal.** Twenty-six berries on the wreath, twelve on the left and fourteen on the right. Plain edge. *Plate.*

No. 69—1875. Liberty Head. Thirteen Stars.

OBVERSE—Liberty head, thirteen stars, 1875.

REVERSE—*Half Dollar Cal*, inside a wreath. Reported.

No. 70—1875. Indian Head. Thirteen Stars.

Point of neck points to the first star on left. First feather points to the sixth star. 1875 under the head, the 1 and 5 touching the border. Large stars.

REVERSE— $\frac{1}{2}$ *Dollar Cal*, inside an almost closed wreath. Period after *Cal*. About twenty-four berries on the wreath, some not struck up. Plain edge.

No. 71—1876. Liberty Head. Thirteen Stars.

Point of neck points to the first star on left. 1876 under the head, the 1 small and just below the point of neck. Point of diadem points to the sixth star.

REVERSE— $\frac{1}{2}$ *Dollar Cal*, inside an almost closed wreath. Berries on the wreath are mere specks. Plain edge.

No. 72—1876. Indian Head. Thirteen Stars.

OBVERSE—Indian head, thirteen stars, 1876.

REVERSE— $\frac{1}{2}$ *Dollar*, inside a wreath. Reported.

No. 73—1876. Indian Head. Thirteen Stars.

First star on left opposite point of neck. **First feather points to, and almost touches, the seventh star.** 1876 under the head. The 1 of date is double cut, is directly beneath the point of neck and the base touches the border.

REVERSE— $\frac{1}{2}$ *Dollar Cal*, inside an open wreath. **Sixteen berries on the wreath in pairs.** Plain edge.

No. 74—1876. Indian Head. Thirteen Stars.

First star on left opposite point of neck. 1876 under the head, the point of neck pointing to the 1. **Point of sixth star between the first and second feathers.**

REVERSE— $\frac{1}{2}$ *Dollar Cal*, inside an open wreath. **Twenty-eight berries on wreath in pairs.** Tips of all leaves turn down, the second on the lower right touching the border. Plain edge.

No. 75—1880. Indian Head. Thirteen Stars.

Point of neck points to the first star on left. First feather almost touches the sixth star. Stars large, blunt and several touch the border. 1880 under the head, the figures out of line.

REVERSE— $\frac{1}{2}$ *Dollar*, inside an almost closed wreath. The fraction large, the letters in the word *Dollar* small. Would be about twenty-three berries on wreath if all were struck up. A berry by the center of the *R*, another by the base of the *D*. Plain edge.

No. 76—1881. Indian Head. Thirteen Stars.

First star on left opposite point of neck. Point of sixth star between the first and second feathers. 1881 under the head.

REVERSE— $\frac{1}{2}$ *Dollar*, inside an open wreath. Large fraction. About twenty-eight berries on wreath, some not well struck up. Sawtooth border. Plain edge.

No. 77—1882. Indian Head. Thirteen Stars.

OBVERSE—Indian head, thirteen stars, 1882 under the head. The first star on left opposite the chin. The last star is at the last feather.

REVERSE— $\frac{1}{2}$ *Dollar Cal*, inside a wreath. Reported.

ONE DOLLAR OCTAGON

No. 1—No Date. Liberty Head. Thirteen Stars.

First star on left beneath, and almost touching, the neck, second star opposite front of neck. Point of diadem points to the upper part of the sixth star.

REVERSE—*California* (upper left and above), *Gold* (right), *One Dol* (below), around coin and next to border. Period after *Gold*, *One* and *Dol*. An eagle, holding in its beak a scroll, in its talons a shield and laurel branch, in center of coin. Slight die defect in lower part of the *O* of *California*. Reeded edge. *Plate*.

No. 2—1853. Liberty Head. Seven Stars.

OBVERSE—Liberty head, seven stars. Point of neck points to the first star on the left.

REVERSE—*A star California A star Gold A star Deri*, around and outside a beaded circle. *1 Dollar 1853*, inside the circle. Reported.

No. 3—1853. Liberty Head. Eight Stars.

First star on left below and touching the front part of neck. Point of diadem points above the fourth star. **The eighth star closer to head than border.**

REVERSE—*A star* (lower left), *California* (upper left and above), *Gold* (right), *A star* (lower right), *Deri* (below), all outside a beaded circle. Letters in *Deri* slightly out of line but **not** circular. *1 Dollar 1853*, inside the circle. Large date. Poorly reeded edge. *Plate*.

No. 4—1853. Liberty Head. Eight Stars.

First star on left below, and almost touching, the point of neck. Point of diadem points to the upper part of the fourth star. **The eighth star nearer the border than the head.**

REVERSE—*A star* (lower left), *California* (upper left and above), *Gold* (upper right), *A star* (lower right), *Deri* (below), all outside a beaded circle. ***Deri* crudely struck and circular. 1 Dollar 1853**, inside the circle, **the word *Dollar* slanting upward**. Large date, **the 3 touching the circle**. The left stand of the 1 (above *Dollar*), is missing. Reeded edge.

No. 5—1853. Liberty Head. Eight Stars.

OBVERSE—Similar to No. 4 except that **the eighth star is half-way between the border and the head.**

REVERSE—Similar to No. 4 except that **the word *Dollar* slants slightly downward; the 3 of date does not touch circle and the 1 (above Dollar), has a complete stand.**

No. 6—1853. Liberty Head. Ten Stars.

First star on left opposite point of neck. Fourth star opposite point of diadem. Head not square with octagon. Stars small.

REVERSE—*A star* (lower left), *California* (left and upper left), *Two Stars* (upper right), *Gold*, (lower right), *FD* (below), all outside a beaded circle. Period after *Gold*. Some letters not well struck up. *1 Dollar 1853*, inside the circle. Letters in *Dollar* uneven. **The G of *Gold* is upside down.** Figures small. Reeded edge.

No. 7—1853. Liberty Head. Twelve Stars.

OBVERSE—Liberty head, twelve stars.

REVERSE—*California Gold N. 1 Dollar 1853*. Reported.

No. 8—1853. Liberty Head. Thirteen Stars.

First star on left slightly above point of neck. Point of diadem points above the sixth star. **First star on right below, and to the right of, curl of hair.**

REVERSE—*Cluster of four dots* (lower left), *California* (left and upper left), *Cluster of four dots* (upper right), *Gold* (right), *Cluster of four dots* (lower right), *A star N A star* (below), all outside a beaded circle. Period after *N. 1 Dollar 1853*, inside the circle. Large date. Reeded edge. *Plate*.

No. 9—1853. Liberty Head. Thirteen Stars.

First star on left opposite point of neck. Point of diadem points above the sixth star. **First star on right almost opposite the lower curl.**

REVERSE—Same as No. 8.

No. 10—1854. Liberty Head. Eight Stars.

First star on left below front part of neck, second star slightly below chin. Point of diadem points to the fourth star.

REVERSE—*A star* (lower left), *California* (left, upper left and above), *Gold* (upper right and right), *A star* (lower right),

Deri (below), all outside a beaded circle. *1 Dollar 1854*, inside the circle. Large date. Some letters crudely struck. Reeded edge.

No. 11—1854. Liberty Head. Ten Stars.

First star on left opposite front of neck. Point of diadem points above the fourth star.

REVERSE—*California* (left and upper left), *A star* (upper right), *Gold* (right), *FD* (below), all outside a beaded circle. Period after *California* and *Gold*. *1 Dollar 1854*, inside the circle. Letters in *Dollar* slightly out of line. Reeded edge.

No. 12—1854. Liberty Head. Ten Stars.

OBVERSE—Same as No. 11.

REVERSE—*California* (left), *A star* (directly above), *Gold* (upper right), *A star* (lower right), *FD* (below and slightly to the right), all outside a beaded circle. Period after *California* and *Gold*. *1 Dollar 1854*, inside the circle. The *R* of *Dollar* considerably out of line. Reeded edge.

No. 13—1854. Liberty Head. Ten Stars.

OBVERSE—Same as No. 11.

REVERSE—*California* (left), *A star* (upper right), *Gold* (right), *FD and a star* (below), all outside a beaded circle. *1 Dollar 1854*, inside the circle. Letters in *Dollar* slightly out of line. Reeded edge.

No. 14—1854. Liberty Head. Thirteen Stars.

First star on left opposite front of neck. Point of diadem points above the sixth star.

REVERSE—*Cluster of seven dots* (lower left), *California* (left and upper left), *Cluster of four dots* (upper right), *Gold* (right), *Cluster of seven dots* (lower right), all outside an open wreath. *1 Dollar 1854*, inside the wreath. Sixteen berries on the wreath in pairs. Date uneven. Reeded edge.

No. 15—1854. Liberty Head. Thirteen Stars.

Point of neck points to, and almost touches, the first star on left. Point of diadem points above the sixth star.

REVERSE—*A star* (lower left), *California* (left, upper left and above), *Gold* (upper right), *1854* (right), *A star* (lower right), *One Dol* (below), around coin and next to border. An eagle,

holding in its talons a shield and laurel branch, **but no ribbon in beak**, in center of coin. Reeded edge.

No. 16—1854. Liberty Head. Thirteen Stars.

First star on left below and touching neck, second star opposite front of neck. Point of diadem points just above the sixth star. REVERSE—*A star* (lower left), *California* (upper left), *Gold* (upper right), *1854* (right), *A star* (lower right), *One Dol* (below), around coin and next to border. Period after *Dol*. An eagle, **holding in its beak a scroll**, in its talons a shield and laurel branch, in center of coin. Poorly reeded edge. *Plate*.

No. 17—1855. Liberty Head. Eight Stars. Reported.

No. 18—1855. Liberty Head. Ten Stars.

First star on left opposite front of neck. Point of diadem points above the fourth star.

REVERSE—*California* (left and upper left), *A star* (upper right), *Gold* (right), *FD* (below and slightly to the left), all outside a beaded circle. Period after *California* and *Gold*, the period after *Gold* being too far below. The *F* of *FD* is double cut. *1 Dollar 1855*, inside the circle. Letters of *Dollar* out of line. Lower part of the last 5 of date appears double cut. Reeded edge.

No. 19—1855. Liberty Head. Thirteen Stars.

First star on left opposite front of neck. Point of diadem points above the sixth star.

REVERSE—*Cluster of four dots* (lower left), *California* (left and upper left), *Gold* (upper right), *N* (right), *R* and *a cluster of four dots* (lower right), around and outside an open wreath. Period after *Gold*, *N* and *R*. *1 Dollar 1855* inside the wreath. Twenty berries in pairs, appearing like clubbed stems. Reeded edge.

No. 20—1856. Liberty Head. Eight Stars. Reported.

No. 21—1856. Liberty Head. Ten Stars.

First star on left opposite front of neck. Point of diadem points above the fourth star.

REVERSE—*California* (left), *A star* (upper right), *Gold* (right), *A star* (lower right), all outside a beaded circle. *1 Dollar 1856* inside the circle. Lower part of both *L*'s and the *A* in *Dollar* appear double cut. Reeded edge.

No. 22—1857. Liberty Head. Eight Stars.

OBVERSE—Liberty head, eight stars.

REVERSE—*California Gold Deri*, around and outside a beaded circle. *1 Dollar 1857* inside the circle. Reported.

No. 23—1857. Liberty Head. Thirteen Stars. Reported.**No. 24—1858. Liberty Head. Thirteen Stars.**

OBVERSE—Small liberty head, thirteen stars.

REVERSE—*1 Dollar 1858* in wreath, *California* (above), *Gold* (below), outside wreath. Reported.

NOTE: for the 1858 Liberty Head—Thirteen Stars—
with letter **K** under the head, see appendix.

No. 25—1859. Liberty Head. Ten Stars.

OBVERSE—Liberty head, ten stars.

REVERSE—*California A star Gold A star FD*, around and outside an open wreath. *1 Dollar 1859* inside the wreath. Reported.

No. 26—1860. Liberty Head. Eleven Stars.

OBVERSE—Liberty head, eleven stars.

REVERSE—*California* (left), *Gold* (right), outside an open wreath. *1 Dollar 1860* inside the wreath, the 1 in open part. Nineteen berries on wreath, nine on the left and ten on the right. Reported.

No. 27—1860. Liberty Head. Thirteen Stars.

Point of neck points downward to the first star on left. Point of diadem points between the fifth and sixth stars. A detached curl in the upper part of cheek.

REVERSE—*California* (left), *Gold* (right), outside an open wreath. *1 Dollar 1860* inside the wreath, the 1 in open part. Nineteen berries on wreath, nine on left, ten on right. Right stand of *R* in *Dollar* touches a berry. A small dot above and touching the upper part of the *A* in *Dollar*. The 1 in open part of wreath is double cut. The *O* in date large and double cut. Poorly reeded edge.

No. 28—1862. Liberty Head. Thirteen Stars. Reported.

NOTE: For the 1863 Liberty Head, Thirteen Stars, see the appendix.

No. 29—1868. Liberty Head. Thirteen Stars—G.

First star on left opposite front of neck. Point of diadem points between the sixth and seventh stars. Letter G under the head. Beads on the neck.

REVERSE—*California* (above), an open wreath. *Gold 1 Dollar 1868*, inside the wreath. Period after *Gold*. A leaf on either side of the 1. About twenty berries on the wreath. Poorly reeded edge.

No. 30—1869. Liberty Head. Thirteen Stars—G.

First star on left opposite front of neck. Point of diadem points between sixth and seventh stars. Letter G under the head. Beads on the neck.

REVERSE—*California* (above), outside an open wreath. *Gold 1 Dollar 1869* inside the wreath. Period after *Gold*. A leaf on either side of the 1. Twenty berries on wreath. Reeded edge. *Plate.*

No. 31—1870. Liberty Head. Thirteen Stars.

First star on left below front part of neck, second star opposite the lower part of throat. Point of diadem points below and to the left of the seventh star.

REVERSE—*1 Dollar 1870* inside an open wreath, the large 1 in open part. Twenty berries on wreath, with most of the stems missing from those on the right. Bottom part of the *O* in *Dollar* double cut. Reeded edge.

No. 32—1870. Liberty Head. Thirteen Stars—G.

Point of neck points to, and touches, first star on left. Point of diadem points between the sixth and seventh stars. Second star on left touches the border. Letter G under head.

REVERSE—*California* (left, upper left and above), *Gold* (right), outside an open wreath. *1 Dollar 1870*, inside the wreath. Large 1. Fourteen berries on the wreath, one berry serving as a period after the date. Two berries on one stem below the date, and two berries on one stem on outside of lower left wreath. Date out of line. The *O* in *Dollar* double cut. Reeded edge.

No. 32-A—1870. Liberty Head. Thirteen Stars—G.

OBVERSE—Similar to No. 32 except that the stars are flat and the first star on left does not touch the point of neck.

REVERSE—Same as No. 32.

No. 33—1870. Liberty Head. Thirteen Stars—H.

OBVERSE—Liberty head, thirteen stars, letter H under the head.

REVERSE—*California Gold. 1 Dollar 1870.* Reported.

No. 34—1871. Liberty Head. Eleven Stars.

First star on left opposite point of neck. Point of diadem points just below the fifth star.

REVERSE—*Cal* (above), *Gold* (below), outside an open wreath. The *L* and *D* of *Gold* angle upward and are double cut. *1 Dollar 1871* inside the wreath. Fourteen berries on wreath, one very small one below the *R*, another slightly larger on a leaf at the lower right. Poorly reeded edge. *Plate.*

No. 35—1871. Libery Head. Thirteen Stars—G.

Point of neck points to, and almost touches, first star on left. Point of diadem in front of the seventh star. Point of tenth star almost touches roll of hair. 1871 and letter G under the head.

REVERSE—*California* (left, upper left and above), *Gold* (right), outside an open wreath. Period after *Gold. 1 Dollar*, inside the wreath. Large *l*. Eight berries on wreath in pairs. Upper right leaf in wreath almost touches the *l*. The *R* in *Dollar* out of line. Reeded edge.

No. 36—1872. Indian Head. Thirteen Stars.

First star on left opposite point of neck. Point of sixth star points between the first and second feathers. 1872 under the head, with a period after.

REVERSE—*California* (upper left and above), *Gold* (upper right), above an almost closed wreath. A dot, probably meant for a period, after *Gold. 1 An ornament Dollar and a star* inside the wreath. Twenty-one berries on the wreath. A border break connects the *L* and almost touches the *D* in *Gold*. Reeded edge. *Plate.*

No. 37—1873. Indian Head. Thirteen Stars.

Point of neck points to the first star on left. The third feather touches the seventh star. Several stars touch border, the tenth star by a slight die break. 1873 under the head.

REVERSE—*California* (left, upper left and above), *Gold* (upper right), above an almost closed wreath. Period after *Gold. 1 An ornament Dollar and a star* inside the wreath. Twenty-seven

berries on wreath, fourteen on the left and thirteen on the right. One berry missing at the *R* in *Dollar*. Several letters touch border. Plain edge.

No. 38—1874. Indian Head. Thirteen Stars.

Point of neck points to, and almost touches, the first star on left. Last seven feathers point to seven stars on right. 1874 under the head.

REVERSE—*California* (upper left and above), *Gold* (upper right), above an almost closed wreath. Period after *Gold*. *I An ornament Dollar and a star*, inside the wreath. Twenty-seven berries on wreath, fourteen on the left and thirteen on the right. Poorly reeded edge. *Plate*.

No. 39—1875. Indian Head. Thirteen Stars.

First star on left opposite point of neck. First feather points to the seventh star. 1875 under the head, the 1 directly below the point of neck.

REVERSE—*1 Dollar Cal*, inside an almost closed wreath. Period after *Cal*. Sixteen berries on wreath. Plain edge.

No. 40—1875. Indian Head. Thirteen Stars.

Point of neck points to the first star on left. First feather points to the sixth star. 1875 under the head, the 1 directly below the point of neck.

REVERSE—*California* (upper left and above), *Gold* (upper right), above an almost closed wreath. *I An ornament Dollar and a star*, inside the wreath. **Twenty berries on wreath**, two beneath the *A* and *F* in *California*. Plain edge.

No. 41—1875. Indian Head. Thirteen Stars.

OBVERSE—Same as No. 40.

REVERSE—*California* (upper left and above), *Gold* (upper right), above an almost closed wreath. *I an ornament Dollar and a star*, inside the wreath. **Twenty-three berries on the wreath**, two inside the wreath opposite the lower part of the *D* and *R* in *Dollar*, and a berry on the outside beneath the first *I* in *California*. A berry below, and to the left of, the lower part of the *D* in *Gold*. Plain edge.

No. 42—1875. Indian Head. Thirteen Stars.

OBVERSE—Same as No. 40.

REVERSE—*California* (upper left and above), *Gold* (upper right, above an almost closed wreath. **Period after Gold.** *1 An ornament Dollar and a star*, inside the wreath. **About twenty-six berries on wreath**, a berry just above, and one on either side of, the top of the 1. There are berries beneath the *C*, *L* and *F* in *California*. Poorly reeded edge.

No. 43—1876. Small Liberty Head. Thirteen Stars.

OBVERSE—Small liberty head, thirteen stars, 1876 under the head.

REVERSE—*California Gold*, outside an open wreath. *A star One Dollar and a star*, inside the wreath, the first star between points of the wreath. Reported.

No. 44—1876. Indian Head. Thirteen Stars.

Point of neck points below the first star on left. Point of neck is beyond the 1 of date. Stars flatly struck and the seventh star touches the first feather. The three upper feathers are double cut. 1876 under the head.

REVERSE—*1 Dollar Cal*, inside an open wreath. Period after *Cal*. Eleven berries on the wreath, six on the left and five on the right. Small planchet. Plain edge. (Reported.)

No. 45—1876. Indian Head. Thirteen Stars.

Point of neck points to the lower part of the first star on left. First feather points to the sixth star. 1876 under the head, the 1 directly below the point of neck and the 6 struck over a 5. There is a dot in the upper part of the 7.

REVERSE—*California* (upper left and above), *Gold* (upper right), above an almost closed wreath. Several letters touch border. *1 an ornament Dollar and a star*, inside the wreath. **Twenty-two berries on the wreath**, an extra berry on the lower right and another on the inside of the left wreath almost touching the ribband. Plain edge.

No. 46—1876. Indian Head. Thirteen Stars.

OBVERSE—Same as No. 45.

REVERSE—Similar to No. 45, except that the right wreath is detached at the ribband and **there are only twenty berries on**

the wreath, the extra berries missing. Wreath lighter than No. 45. Plain edge.

No. 47—1876. Indian Head. Thirteen Stars.

First star on left opposite point of neck. First feather points to the sixth star. Point of neck points to the 8 of date, which is under the head and touching the border.

REVERSE—*California Gold* (almost encircling the coin), outside an almost closed wreath. ***A star 1 Dollar and an ornament***, inside the wreath. The points of the wreath are close to the star. **Sixteen berries on the wreath**, one touching the *R* of Dollar. Plain edge.

ONE DOLLAR ROUND

No. 1—1853. Liberty Head. Thirteen Stars.

OBVERSE—Liberty head, thirteen stars.

REVERSE—*A star California Gold A star N* the letter *N* in exergue. *1 Dollar 1853*. Reported.

No. 2—1853. Liberty Head. Thirteen Stars—FD.

OBVERSE—Liberty head, thirteen stars, letters *FD* on obverse. Reported.

No. 3—1853. Liberty Head. Thirteen Stars—GG.

First star on left beneath head, second star opposite point of neck. Point of diadem points between the sixth and seventh stars. Small letters *GG* under the head and towards the back, beneath the hair.

REVERSE—*One* (lower left), *Dollar* (left and upper left), *California* (above and upper right), *Gold* (lower right), *1853* (below), around coin and next to border. Period after *Dollar* and *Gold*. An eagle, with wings at side, holding in its talons a laurel branch, in center of coin. Reeded edge.

No. 4—1854. Liberty Head. Thirteen Stars.

First star on left below front part of neck, point of neck points to the second star. Point of diadem points just above the seventh star.

REVERSE—*California* (left), *Gold* (right), outside an open wreath. *1 Dollar 1854*, inside the wreath, the *1* in open part. About twenty-four berries on wreath. Reeded edge.

No. 5—1854. Liberty Head. Thirteen Stars.

First star on left below head, point of neck points to the second star. Point of diadem points between the sixth and seventh stars. Peculiar outline of hair at back of neck.

REVERSE—*A star G A star* (lower left), *California* (left, upper left and above), *Gold* (upper right and right), *A star L A star* (lower right), around and outside an open wreath. The letters *G* and *L* (between the stars), face opposite from the other letters. *1 Dollar 1854*, inside the wreath, the top of the large *1* in open part. About nineteen berries on wreath, ten on the left wreath

with a unique cluster of three berries on the outside and one on the inside in a group on the lower left wreath; about nine berries on the right wreath, including an attempt at a cluster of three berries on the outside of the lower right wreath opposite the letter *L* (between stars). Unusually long ribbands beneath the wreath which are folded back, both points touching the border. Reeded edge.

No. 6—1854. Liberty Head. Thirteen Stars—FD.

First star on left below front of neck, second star opposite the front part of neck. Point of diadem points to the lower part of the seventh star. Letters FD under the head, the F crude and out of line. Thirteenth star is under the FD.

REVERSE—*California* (left), *Gold* (right), outside an open wreath. The *O* and *D* of *Gold* touch leaves and the *N* in *California* touches a berry. *1 Dollar 1854*, inside the wreath, the 1 in open part. Several stems with berries detached from the wreath. Poorly reeded edge. *Plate*.

No. 7—1870. Liberty Head. Thirteen Stars.

First star on left below front of neck, point of neck points to the second star. Point of diadem points between the sixth and seventh stars.

REVERSE—*California* (left, upper left and above), *Gold* (upper right), above an open wreath. Period before the *C* of *California* and after the *D* of *Gold*. *1 Dollar 1870*, inside the wreath, the large 1 in open part. Period after the date. Twelve berries on wreath. Reeded edge. *Plate*.

No. 8—1870. Liberty Head. Thirteen Stars—G.

First star on left opposite lower part of throat. Point of diadem points to the lower part of the sixth star. 1870 and letter G under the head, the date curved with the coin.

REVERSE—*California* (left, upper left and above), *Gold* (right), outside an open wreath. *1 Dollar*, inside the wreath, the large 1 in open part. Ten berries on wreath, two pairs and one single on either side. Reeded edge. *Plate*.

No. 9—1870. Liberty Head. Thirteen Stars—G.

First star on left under head, second star opposite front of neck.

Point of diadem points between the sixth and seventh stars. Letter G under the head.

REVERSE—*California* (left, upper left and above), *Gold* (right), outside an open wreath. *1 Dollar 1870*, inside the wreath, the large 1 in open part. Twelve berries on the wreath in pairs. The lower part of the *D* in *Dollar* touches a berry and the upper part of the *R* is double cut. Reeded edge.

No. 10—1871. Liberty Head. Thirteen Stars—G.

Point of neck points downward to the first star on left. Point of diadem points above the sixth star. 1871 and letter G under the head, the G close to the head. Date curved and out of line.

REVERSE—*California* (left, upper left and above), *Gold* (right), outside an open wreath. *1 Dollar*, inside the wreath, the large 1 in open part. Eight berries on wreath in pairs, the berry at the lower right having no stem. Reeded edge. *Plate*.

No. 11—1872. Liberty Head. Thirteen Stars—G.

OBVERSE—Liberty head, thirteen stars, 1872 and letter G under the head.

REVERSE—*California Gold* (outside), *1 Dollar* (inside), a wreath. Large 1. Reported.

No. 12—1872. Indian Head. Thirteen Stars.

First star on left opposite point of neck. The second feather points to, and almost touches, the sixth star. The thirteenth star double cut. 1872 under the head, the figure 8 defective.

REVERSE—*California Gold*, above an almost closed wreath. Several letters crudely cut. *1 an ornament Dollar and a star*, inside the wreath, the 1 between lower end leaves. Twenty-three berries on wreath, eleven on the left and twelve on the right. A berry at the lower parts of the *D* and *R* of *Dollar*, the latter barely touching. Reeded edge. *Plate*.

No. 13—1872. Indian Head. Thirteen Stars.

First star on left opposite point of neck. Second feather points to, and almost touches, the sixth star. 1872 under the head.

REVERSE—*California Gold*, above an open wreath. *1 an ornament, Dollar, a different ornament, TOKEN*, inside the wreath.

Period after *Token*. A berry makes a period after *Dollar*. Twenty-six berries on wreath, twelve on the left and fourteen on the right. The *L* of *Gold* defective. Reeded edge. *Plate*.

No. 14—1874. Indian Head. Thirteen Stars.

OBVERSE—Indian head, thirteen stars, 1874 under the head.

REVERSE—*California Gold* (outside), *1 Dollar* (inside) a wreath. Reported.

APPENDIX LIST

QUARTER DOLLAR OCTAGON

APPENDIX

(There is often much controversy arising among dealers and collectors as to what constitutes the Genuine pieces. Those generally accepted as Genuine are of pure gold, and from appearance, style and quality are considered to have been struck in the years dated. After comparing hundreds of specimens, I have taken from my own cabinet, and some similar that have been reported, those that do not seem to be in this class and have listed them under this Appendix list. Some of these seem to be pure gold but appear to be later issues than the date upon the coin.

Also under the Appendix I have listed some so-called Souvenir pieces, although I have made no special effort to obtain these, or descriptions of same, but publish these for the benefit of any who may be interested.)

No. A-1—1854. Indian Head. Sixteen Stars.

OBVERSE—Indian head, sixteen stars.

REVERSE—*California Gold* 1854. Reported.

No. A-2—1857. Large Liberty Head. Nine Stars.

First star on left opposite lower part of throat. A ribband resembling pinchers grips the point of star at back of head.

REVERSE— $\frac{1}{4}$ *Dollar* 1857, inside an open wreath, the $\frac{1}{4}$ in open part. About thirteen berries on the wreath discernable, one without a stem touching the *D* of *Dollar*. The *D* and *R* touch the wreath and the *D*, *A* and *R* are double cut. A die defect makes the top of the 7 appear double cut. Plain edge.

No. A-3—1865. Liberty Head. Ten Stars.

OBVERSE—Liberty Head, ten stars.

REVERSE—*A star California A star Gold*, around and outside an almost closed wreath. 1865, inside the wreath. About seven berries on wreath. Plain edge.

No. A-4—1865'. Liberty Head. Fourteen Stars.

OBVERSE—Liberty head, fourteen stars.

REVERSE—Same as No. 3.

No. A-5—1865. Indian Head. Eight Stars.

OBVERSE—Indian head, eight stars.

REVERSE—Same as No. 3.

No. A-6—1870. Liberty Head. Thirteen Stars.

OBVERSE—Point of neck points to, and touches, the first star on left. Point of sixth star almost touches the top of the diadem. The crude head tips backward.

REVERSE— $\frac{1}{4}$ *Dollar 1870*, inside an open wreath, the $\frac{1}{4}$ in open part. Slanting line between fraction. About thirteen berries on wreath, eight on the right and about five on the left. A berry almost touches the base of the 1 of date. The *R* of *Dollar* appears double cut. Plain edge.

No. A-7—1875. Arms of California.

OBVERSE—Arms of California, “Eureka” above, a star on each side.

REVERSE—*A star Californai A star Gold*, around inside circle. *1875* in center. A fine wreath around lower half of circle, seven stars around upper half. Plain edge.

No. A-8—1876. Small Liberty Head. Thirteen Stars.

First star on left opposite point of neck. Point of diadem points to, and touches, the sixth star. The 8 of date touches neck. *1876* under the head. Peculiar roll of hair at back of head.

REVERSE— $\frac{1}{4}$ *Cal Gold and a star*, inside an almost closed wreath. the top of the 1 of fraction in open part. A dot between *Cal* and *Gold*. Sixteen berries on the wreath in pairs. Plain edge.

No. A-9—1876. Indian Head. Thirteen Stars.

OBVERSE—Indian head, thirteen stars.

REVERSE— $\frac{1}{4}$ *Cal Gold and a star*, inside a wreath. Reported.

No. A-10—1881. Indian Head. Thirteen Stars.

First star on left opposite point of neck. Point of neck merges into the top of the 1 of date. Part of border missing. *1881* under the head. The beads at the base of the feathers are represented by holes in the band.

REVERSE— $\frac{1}{4}$ *Cal. Gold and a star*, inside an open wreath, the top of the 1 of fraction in open part. Period between *Cal* and *Gold*. About twelve berries on wreath. Plain edge.

QUARTER DOLLAR ROUND—Appendix

No. A-1—1853. Indian Head. Ten Stars.

OBVERSE—Indian head, ten stars.

REVERSE—*A star California A star Gold*, around and outside an almost closed wreath. *1853* inside the wreath. Several letters double cut. Plain edge.

No. A-2—1855. Large Liberty Head. Eleven Stars.

First star on left under head, second star opposite lower part of throat. The sixth star rests on the diadem. All stars touch border.

REVERSE— $\frac{1}{4}$ *Dollar 1855*, inside an open wreath, the $\frac{1}{4}$ in open part. Sixteen berries on the wreath. Plain edge.

No. A-3—1861. Indian Head. Nine Stars.

OBVERSE—Indian head, nine stars.

REVERSE—*A star California A star Gold*, around and outside an open wreath. *1861* inside the wreath. About ten berries on the wreath. Plain edge.

No. A-4—1870. Liberty Head. Thirteen Stars.

OBVERSE—Liberty head, thirteen stars.

REVERSE— $\frac{1}{4}$ at top of wreath. Detached leaves around. Reported.

No. A-5—1871. Small Liberty Head. Thirteen Stars—H.

Point of neck points to the first star on left. Point of diadem points to the sixth star. A curl down side of neck and back of head. *1871* and a small letter *H* under the head.

REVERSE— $\frac{1}{4}$ *Dollar Cal*, inside an open wreath, the $\frac{1}{4}$ in open part. Large letters and figures. Fourteen berries on the wreath, two beneath the word *Cal*. Plain edge.

No. A-6—1876. Liberty Head. Thirteen Stars.

OBVERSE—Liberty head, thirteen stars.

REVERSE— $\frac{1}{4}$ *Cal Gold and a star*, inside a wreath. Reported.

No. A-7—1876—Indian Head, Thirteen Stars.

OBVERSE—Liberty head, thirteen stars.

REVERSE— $\frac{1}{4}$ *Cal Gold and a star*, inside a wreath. Reported.

No. A-8—1880. Indian Head. Thirteen Stars.

Point of neck points to, and almost touches, the first star on left. A point of the seventh star touches the side of the third feather. 1880 under the head.

REVERSE— $\frac{1}{4}$ *Cal Gold*, inside an almost closed wreath. A dot between *Cal* and *Gold*. Letters crude and out of line. About twenty-five berries on the wreath. Tips of most leaves turn down, except end leaves which turn up. Plain edge.

No. A-9—1881. Indian Head. Thirteen Stars.

First star on left opposite lower part of throat. Stars large and crude. A point of the sixth star touches the side of the first feather. 1881 under the head, the figures crude.

REVERSE— $\frac{1}{4}$ *F Gold and a star*, inside an almost closed wreath. A period after the *F*. About twenty-four berries on the wreath, thirteen on the left and about eleven on the right. Tips of leaves turn down, except the end leaves which turn up and back. Plain edge.

No. A-10—1884. Arms of California.

OBVERSE—Arms of California, "Eureka" above.

REVERSE—*A star Cal Gold A star Charm*, around inside circle. Period after *Cal*. 1884 in center. A fine wreath completely encloses the inscription. Plain edge.

HALF DOLLAR OCTAGON—Appendix

No. A-1—1854. Indian Head. Thirteen Stars.

OBVERSE—Indian head, thirteen stars, 1854.

REVERSE—*California Gold and a star*, inside a wreath. Twenty berries on the wreath in pairs. Plain edge.

No. A-2—1857. Liberty Head. Sixteen Stars.

Point of neck points to, and almost touches, the first star on left. Point of diadem points to the seventh star. Ugly liberty head.

REVERSE—*A star California A star Gold*, around and outside an almost closed wreath. *1857* inside the wreath. About ten berries on a crude wreath. Plain edge.

No. A-3—1857. Large Indian Head. Ten Stars.

OBVERSE—Large Indian head, ten stars.

REVERSE—*A star California A star Gold*, around and outside an almost closed wreath. *1857* inside the wreath. About thirteen berries on the wreath. Plain edge.

No. A-4—1857. Small Indian Head. Thirteen Stars.

OBVERSE—Small Indian head, thirteen stars.

REVERSE—*A star California A star Gold*, around and outside an almost closed wreath. *1857* inside the wreath. About ten berries on the wreath. Plain edge.

No. A-5—1857. Indian Head. Thirteen Stars—B.

OBVERSE—Indian head, thirteen stars, letter B under the head.

REVERSE—*Two stars California Three stars Gold*, around and outside a wreath. *1857* inside the wreath. Reported.

No. A-6—1868. Liberty Head. Thirteen Stars.

First star on left beneath head, second star opposite point of neck. Point of diadem points between the sixth and seventh stars. The ninth star has six points, all others have five points.

REVERSE—*Half* (lower left), *Dol* (left), *California* (above and upper right), *Gold* (lower right), around and outside an open wreath. Period after *Dol*. Many letters double cut. *1868* inside the wreath. About fourteen berries on the wreath. Three berries on the right wreath opposite the right stand of the second *A* in *California*. Plain edge.

No. A-7—1875. Indian Head. Thirteen Stars.

First star on left opposite point of neck. Third feather points to the eighth star. 1875 under the head, all figures resting on the border. Two crude feathers under the head, both pointing to the 7 of date. Stars large, several touching the border.

REVERSE— $\frac{1}{2}$ *Cal Gold and a star*, inside an open wreath. Period between *Cal* and *Gold*. Twelve berries on the wreath in pairs. Plain edge.

No. A-8—1880. Small Indian Head. Thirteen Stars.

Point of neck points to the lower part of the first star on left. Nine feathers on the Indian head. The first feather points between the fifth and sixth stars. 1880 under the head.

REVERSE— $\frac{1}{2}$ *Cal Gold and a star*, inside an almost closed wreath, the tip of the 1 of fraction in open part. Period between *Cal* and *Gold*. Twenty berries on the wreath in pairs. Tips of all leaves turn down, except the end leaves which turn up. Plain edge.

No. A-9—1880. Large Indian Head. Thirteen Stars.

Point of neck points to the lower part of the first star on left. Twelve feathers on the Indian head. Stringy ends of hair extending below the neck. 1880 under the head.

REVERSE— $\frac{1}{2}$ *Cal Gold and a star*, inside an almost closed wreath. The 1 of fraction in open part. Period between *Cal* and *Gold*. Twenty-eight berries on a thin, poorly executed wreath, the berries extending out in an odd manner. Most tips of the thin leaves turn down. Plain edge.

No. A-10—1884. Arms of California.

OBVERSE—Arms of California, "Eureka" above.

REVERSE—*A star Cal Gold A star Charm*, around inside circle. Period after *Cal*. 1884 in center, with a period after. A fine wreath completely encloses the inscription. Plain edge.

HALF DOLLAR ROUND—Appendix

No. A-1—1853. Liberty Head. Thirteen Stars.

OBVERSE—Liberty head, thirteen stars.

REVERSE—1853, inside an almost closed wreath. Reported.

No. A-2—1854. Small Liberty Head. Fourteen Stars.

First star on left below head, second star opposite point of neck. Point of diadem points to the left side of the seventh star.

REVERSE—*Half* (lower left), *Dol* (left), *California* (above and upper right), *Gold* (lower right), around and outside an open wreath. Period after *Dol*. Many letters double cut. 1854 inside the wreath, with a period between the 8 and 5. About seventeen berries on the wreath. Plain edge.

No. A-3—1854. Indian Head. Twelve Stars.

First star on left beneath point of neck, the second star opposite the point of neck. The third feather points to the eighth star.

REVERSE—*California Gold*, inside of, and most letters touching, a thin wreath. Period between the *C* of *California* and the *G* of *Gold*. Many letters double cut. 1854 in center. No berries on wreath. Plain edge.

No. A-4—1855. Small Indian Head. Thirteen Stars.

OBVERSE—Small Indian head, thirteen stars.

REVERSE—*A star California A star Gold*, around and outside an open wreath. Several letters double cut. 1855 inside the wreath. Ten berries on the wreath, five on each side. Plain edge.

No. A-5—1858. Liberty Head. Thirteen Stars.

OBVERSE—Ugly liberty head, thirteen stars.

REVERSE—*A star California A star Gold*, around and outside an open wreath. 1858 inside the wreath. Twelve berries on the wreath in pairs, six on each side. Plain edge.

No. A-6—1858. Small Indian Head. Thirteen Stars.

OBVERSE—Small Indian head, thirteen stars.

REVERSE—Same as No. 5.

No. A-7—1860. Indian Head. Thirteen Stars.

OBVERSE—Indian head, thirteen stars.

REVERSE—*California Gold and a star*, inside a wreath. Sixteen berries on the wreath in pairs. Plain edge.

No. A-8—1871. Small Liberty Head. Thirteen Stars—H.

Point of neck points down to the first star on left. 1871 and letter H under the head, **the H large**. A curl down the side of neck extends almost the length of the neck. Another curl down back of neck.

REVERSE—*A star Half Dollar Cal*, inside an open wreath, the star in open part. Letters large and long. **Sixteen berries on the wreath in pairs**. There is a berry by the lower part of the *D* and *R* in *Dollar*. Upper left part of the *H* in *Half* touches a leaf.

No. A-9—1871. Large Liberty Head. Thirteen Stars—H.

Point of neck points to the first star on left. 1871 and letter H under the head, **the H small**. A curl down the side of neck extends only about two-thirds the length of the neck. Another curl down back of the neck.

REVERSE—*A star Half Dollar Cal*, inside an open wreath, the star in open part. Letters large and long. **Fourteen berries on the wreath**, two below the word *Cal*. A berry by the upper part of the *D* and *R* in *Dollar*. Plain edge.

No. A-10—1875. Arms of California.

OBVERSE—Arms of California, "Eureka" above.

REVERSE—*A star California A star Gold* around inside circle. 1875 in center. A fine wreath completely encloses the inscription. Plain edge.

No. A-11—1876. Indian Head. Thirteen Stars.

Point of neck points to the lower part of the first star on left. First feather points to the seventh star. 1876 under the head.

REVERSE— $\frac{1}{2}$ *Cal Gold and a star*, inside an open wreath. Faint dot between *Cal* and *Gold*. Twelve berries on the wreath in pairs. Plain edge.

No. A-12—1880. Indian Head. Thirteen Stars.

First star on left opposite, and almost touching, the point of neck. Second star almost touches chin. The second feather points to the sixth star.

REVERSE— $\frac{1}{2}$ *Cal Gold and a star*, inside an almost closed wreath. Period between *Cal* and *Gold*. Poor attempt at berries.

Tips of most leaves turn down, except the end leaves which turn up. Plain edge.

No. A-13—1881. Small Indian Head. Thirteen Stars.

First star on left opposite point of neck. First feather points to the seventh star. 1881 under the head.

REVERSE— $\frac{1}{2}$ *Cal Gold and a star*, inside an open wreath. Period between *Cal and Gold*. About ten berries on the wreath. Plain edge.

No. A-14—1881. Indian Head. Thirteen Stars.

OBVERSE—Indian head, thirteen stars, 1881 under the head.

REVERSE—Large figure " $\frac{1}{2}$," inside a wreath. Reported.

No. A-15—1884. Arms of California.

OBVERSE—Arms of California, "Eureka" above.

REVERSE—*A star Cal Gold A star Charm*, around inside circle. Period after *Cal*. 1884 in center. A fine wreath completely enclosed the inscription.

ONE DOLLAR OCTAGON—Appendix

No. A-1—1854. Liberty Head. Ten Stars.

OBVERSE—Liberty head, ten stars.

REVERSE—*California A star Gold FD*, around and outside a beaded circle. *1854* inside the circle. Reported.

No. A-2—1854. Liberty Head. Ten Stars.

OBVERSE—Liberty head, ten stars.

REVERSE—*A star California TWO STARS Gold FD*, around and outside a beaded circle. *1854* inside the circle. Reported.

No. A-3—1855. Liberty Head. Ten Stars.

OBVERSE—Liberty head, ten stars.

REVERSE—*California, A star Gold FD. 1855.* Reported.

No. A-4—1858. Liberty Head. Thirteen Stars—K.

First star on left below head, second star opposite point of neck. Point of diadem points to the upper part of the sixth star. Letter K under and touching the head and almost touching star.

REVERSE—*California* (above), *Gold* (below), an open wreath. Several letters double cut. The *O* in *Gold* touches a stem of wreath. *1 Dollar 1858*, inside the wreath, the *1* just inside the open part. A small dot below the *5* of date and another above and touching the *A* in *Dollar*. Sixteen berries on wreath in pairs. Plain edge.

No. A-5—1863. Liberty Head. Thirteen Stars.

Point of neck points to the first star on left. Point of diadem points below the sixth star.

REVERSE—*California* (above), *Gold* (below) a beaded circle. *1 Dollar 1863* inside the circle. Large dot after the *R* of *Dollar*. Plain edge.

ONE DOLLAR ROUND—Appendix

No. A-1—No Date. Female Head to the Right.

OBVERSE—Female head to the right.

REVERSE—*Three Stars*, around coin and next to border. *1 Token*, in center of coin. Reported.

